

# mishons

Sales | Lettings | New Homes



# *The Vale*

Ovingdean, Brighton, BN2 7AB

# The Development

## *A contemporary* development of just six, 3 bedroom homes.

We're extremely pleased to offer a rare opportunity to to own a home in a sought-after village location. With high-quality finishes, spacious layout, modern amenities, and stylish design elements, these semi-detached homes are perfect for families seeking a contemporary and comfortable living experience.

Each home features three spacious bedrooms, these homes provide ample room for relaxation and privacy. The master bedroom boasts a bespoke dressing room. the ground floor bedroom has an ensuite bathroom, the first floor bedrooms share a beautifully appointed family bathroom. With a spacious reception room, open plan kitchen/dining space and a garage with additional parking, garden and an office,\* (\*plots 1 and 6 have an outdoor office space) these homes must be viewed.



Office space shown is available on plots 1 & 6 only



Office space shown is available on plots 1 & 6 only



# Specification



## *Key features:*

- Engineered oak flooring with underfloor heating to the ground floor
- Art-deco inspired interiors
- Heritage windows and doors
- Beautiful fitted kitchen styled with navy fronts with contrasting brass
- Fitted Walnut dresser with fitted spice rack
- Quartz worktops
- Integrated appliances including ovens, fridge/freezer and dishwasher
- Fully tiled bathroom with porcelain tiles to floor and walls
- High level rainfall shower to main bathroom
- Garage with power, light and remote controlled door
- EV 7KW charger for electric vehicle
- Separate detached office to plots 1 & 6
- EPC rating B

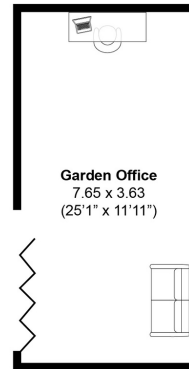
For full specification speak to a member of our team. Specification is subject to change and will be formally confirmed at point of reservation.



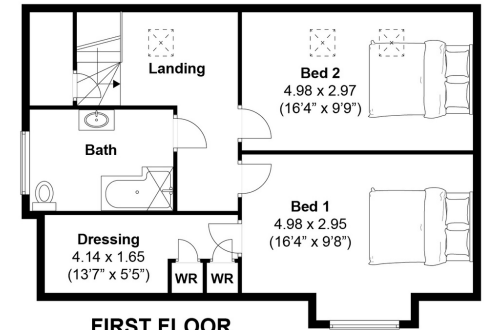
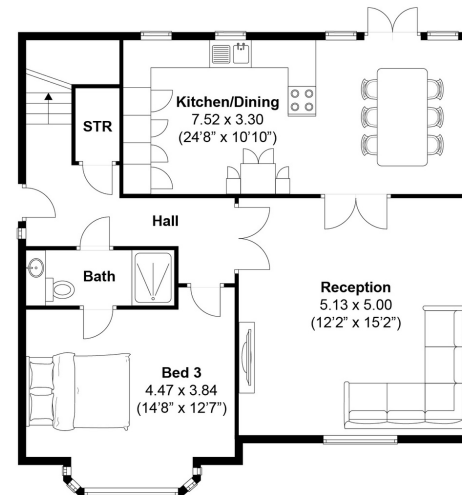
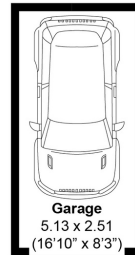
Office space shown is available on plots 1 & 6 only

# Floor Plans

## Plots 1 & 6



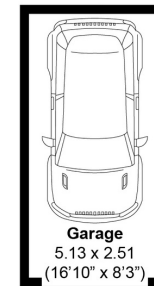
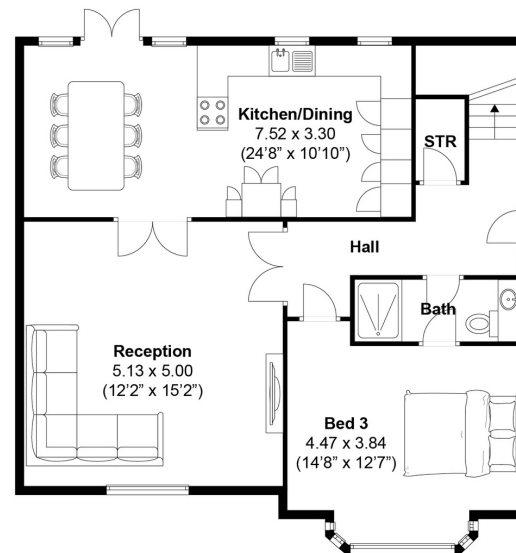
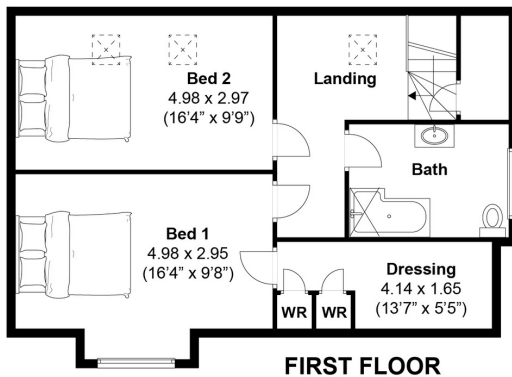
**OUTBUILDING**



*approx. 2007 sq ft.*

# Floor Plans

## Plots 2,3,4 & 5



approx. 1708 sq ft.

Measurements are approximate and are for illustration purposes only. The dimensions are measured internally and in metres and feet. We do not take any responsibility for errors and/or omissions. If you require further verification please discuss with the buyer/owner of the property.



*Scan here for more information*

**01273 77 88 77**

**newhomes@mishons.com**

94 Church Road | Hove | BN3 2EB



# mishons

Sales | Lettings | New Homes

