



Orchard House

Hove, BN3 7AW

mishons



Nestled in the heart of Hove's sought-after Hove Park neighbourhood, Orchard House stands as a modern testament to upscale living. This prestigious penthouse is just one of four of its kind, which occupies a position of unparalleled prestige within the building. Offering an expansive living experience spanning over 1,600 square feet of living space, this property is an excellent example of premium living in Hove!

This exceptional property comprises three generously sized bedrooms, two impeccably designed bathrooms and ample storage throughout. The crowning jewel of this residence is the remarkable open-plan main living space, seamlessly combining form and function to create an inviting environment for daily living and entertaining.

Immerse yourself in the charm of outdoor living with not one but two private balconies. The principal balcony beckons you to unwind and bask in the sun all day, offering a peaceful respite from the world. The main bedroom, complete with an en-suite bathroom and extensive wardrobe space, extends an invitation to the second balcony, shared with bedroom three. Every inch of this penthouse has been thoughtfully designed to maximize your comfort and enjoyment.

The kitchen, a masterpiece of contemporary design, boasts a range of fitted countertops and ample cupboard space, overlooking the expansive living and dining area. Here, culinary creativity and relaxation harmonize in perfect balance, creating a space to savour moments with the family.

Included with this exceptional property are two allocated parking spaces within the secure underground carpark, ensuring your convenience and peace of mind. Meticulously maintained and in impeccable condition, this penthouse exudes a sense of pride and sophistication.

Life in Orchard House is enriched by its proximity to Hove Park, Hove Station, Waitrose and Central Hove, where the vibrant energy of the city centre awaits. Enjoy the best of both worlds as you retreat to your private oasis after exploring the buzz of city life.

In summary, this rare penthouse in Orchard House redefines luxury living with its exceptional features, unbeatable location and meticulous attention to detail. It is not just a home; it's an invitation to experience life at its finest. Don't miss your chance to own this piece of paradise in Hove. Contact us today to schedule a viewing and make this extraordinary property your own.

 OIEO

£1,000,000

3



1



2



B

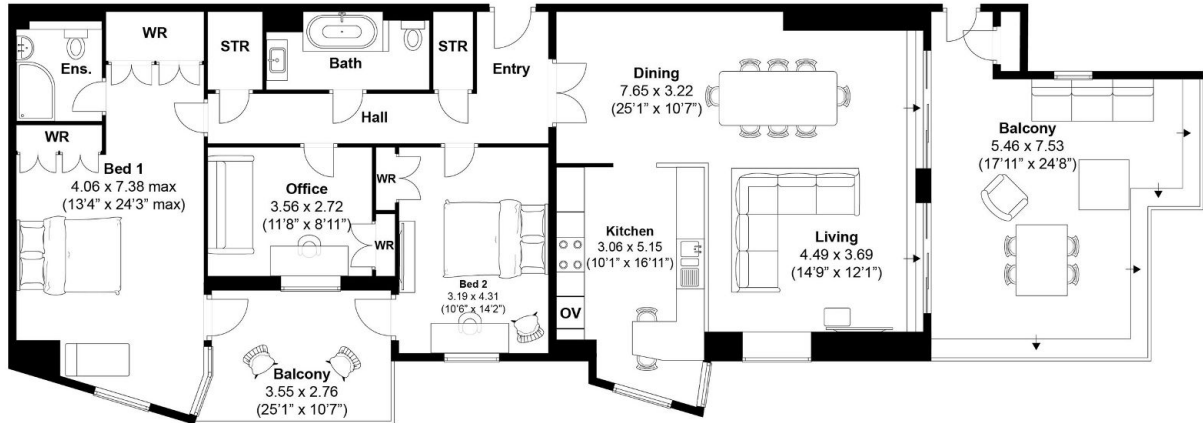


TOTAL FLOOR AREA:
1603 sq. ft. (149 sq. m.) approx

Park View Road, Hove

Approximately 149 sqm (1603 sqft)

mishons





Whatever you're looking for...
We'll help you find it.

mishons

✉ sales@mishons.com

☎ 01273 77 88 77

94 Church Road, Hove, BN3 2EB

Monday-Friday: 8:45 am - 6 pm

Saturday: 9 am - 4 pm

Find us on Facebook and Instagram
@wearemishons or visit mishons.com