



Woodland Avenue

Hove, BN3 6BN

mishons



Situated in the highly coveted Hove Park district, this delightful detached bungalow on Woodland Avenue offers a single-level living experience in a prime location...

This spacious bungalow boasts three generously sized bedrooms, offering ample space for a growing family or hosting guests. With two well appointed bathrooms, convenience and comfort are at the forefront of this home.

A standout feature of this property is the large rear open plan kitchen/living area, flooded with natural light and characterized by a vaulted ceiling. The westerly aspect ensures you'll enjoy the afternoon and evening sun, while the open layout provides a perfect setting for entertaining and family gatherings. A charming conservatory further enhances the living space.

Step outside to discover a serene west-facing courtyard garden, ideal for soaking up the sun. It offers a private oasis for relaxation and leisure.

The property benefits from off-road parking for multiple cars to the front, ensuring convenience and ease of access for both residents and guests.

Situated in the popular Hove Park district, Woodland Avenue offers a peaceful and family-friendly neighbourhood, with proximity to Hove Park itself, local schools, and excellent transport links. The vibrant culture, shopping, and dining options of Hove and Brighton are just a short drive away.

➤ *Guide Price* £625,000

3



1



2



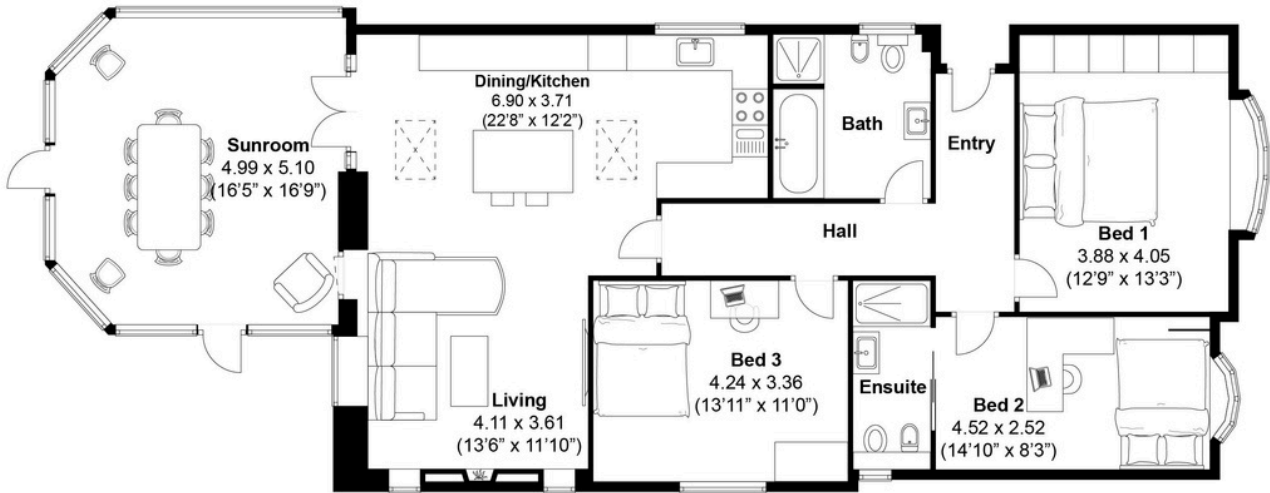
TBC



TOTAL FLOOR AREA:
1450.3 sq. ft. (134.74 sq. m.) approx

Woodlands Avenue, Hove
Approximately 134.74 sqm (1450.3 sqft)

mishons





Whatever you're looking for...
We'll help you find it.

mishons

✉ amy@mishons.com

☎ 01273 778877

94 Church Road, Hove, BN3 2EB

Monday-Friday: 8:45 am - 6 pm

Saturday: 9 am - 4 pm

Find us on Facebook and Instagram
@wearemishons or visit mishons.com