



# *Rutland Gardens*

BN3 5PA

mishons



## Introducing a charming 1-bedroom split-level first-floor apartment nestled in the heart of Hove...

... offering an ideal opportunity for first-time buyers or savvy investors. This delightful residence is strategically located to provide a perfect blend of convenience and tranquility. The split-level layout adds a touch of uniqueness, creating distinct living zones that contribute to a sense of character and style.

The property boasts a prime rear location, ensuring a peaceful retreat from the hustle and bustle of everyday life. The absence of a chain makes the purchasing process seamless and stress-free, providing an added advantage for those eager to make this delightful apartment their own.

One of the standout features of this property is its proximity to an array of amenities. From trendy cafes and restaurants to local shops, everything you need is just a stone's throw away. The convenience extends further with the sea within walking distance, allowing residents to enjoy leisurely strolls along the coastline and take in the refreshing sea breeze.

For those who rely on public transportation, Hove station is conveniently close, offering easy access to various destinations. This strategic location ensures that commuting is a breeze, making it an excellent choice for professionals and those with a busy lifestyle.

➤ *Offers IEO*    £250,000

1



1



1

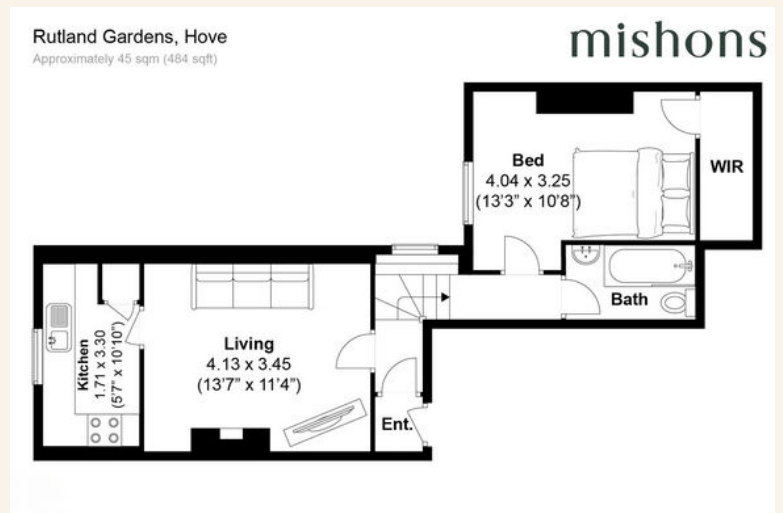


D



TOTAL FLOOR AREA:

484 sq. ft. (45 sq. m.) approx





Whatever you're looking for...  
*We'll help you find it.*

mishons

✉ [harry@mishons.com](mailto:harry@mishons.com)

☎ 07495 69 51 20

94 Church Road, Hove, BN3 2EB

Monday-Friday: 8:45 am - 6 pm

Saturday: 9 am - 4 pm

Find us on Facebook and Instagram  
@wearemishons or visit [mishons.com](http://mishons.com)