



# *Wilbury Gardens*

Hove, BN3

mishons



# Welcome to your new haven of elegance in Central Hove...

where style meets comfort in this recently renovated 2-bedroom apartment. Nestled just moments away from the picturesque seafront, this property offers a perfect blend of modern living and coastal charm. As you step into the apartment, you are greeted by a seamlessly designed space that effortlessly combines functionality with sophistication. The two well-appointed bedrooms provide a tranquil retreat, offering a balance of comfort and privacy. The newly fitted bathroom showcases contemporary finishes, ensuring a luxurious and rejuvenating experience.

The heart of the home lies in the gorgeous open plan kitchen/diner, a culinary haven that caters to both the home chef and those who love to entertain. The kitchen boasts modern appliances, sleek countertops, and a standout island that not only enhances the aesthetic appeal but also serves as a practical asset for hosting gatherings with friends and loved ones.

One of the highlights of this stylish residence is the balcony to the front of the home, offering a delightful outdoor space to enjoy the fresh sea breeze and soak in the vibrant atmosphere of Central Hove. Whether you're sipping your morning coffee or toasting to the sunset, this balcony is the perfect extension of your living space.

The apartment is presented as a turn-key property, meticulously renovated and thoughtfully designed to provide a hassle-free move-in experience. This makes it an ideal choice for first-time buyers looking for a cozy home or savvy investors seeking a prime property in a sought-after location.

This spacious and tastefully appointed apartment not only captures the essence of contemporary living but also places you in the heart of Hove's vibrant community. Don't miss the opportunity to make this stylish residence your own – a home that effortlessly combines modern living with the allure of coastal living.

➤ *Guide Price*    £380,000 -£400,000

2 x



1 x



1 x



D



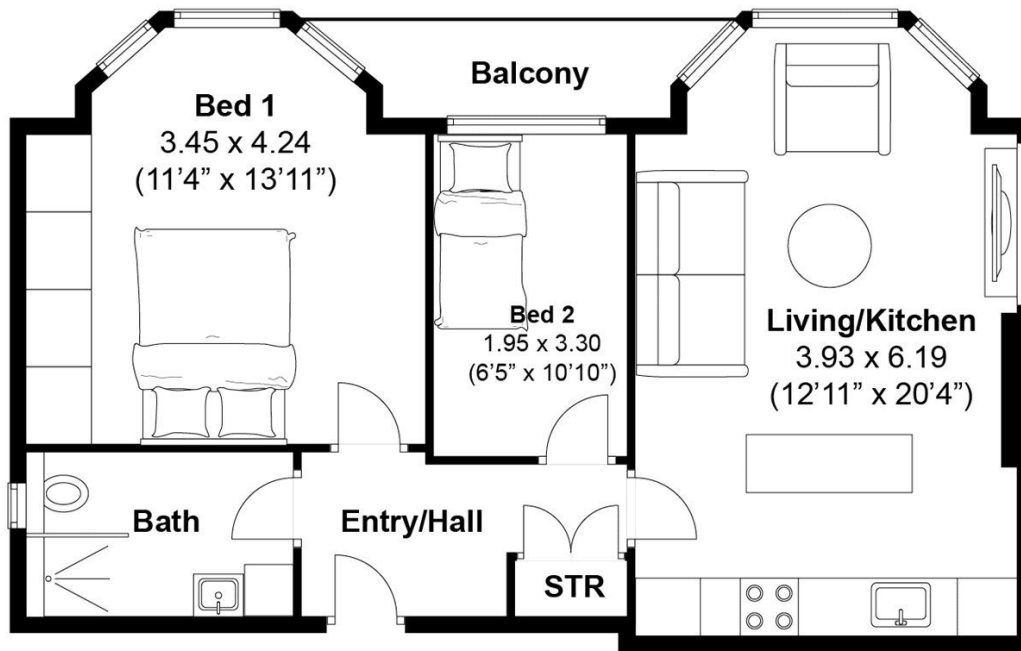
**TOTAL FLOOR AREA:**

619 sq. ft. (57.65 sq. m.) approx

Wilbury Gardens, Hove

Approximately 57.56 sqm (619.6 sqft)

**MISMONS**



Disclaimer:





Whatever you're looking for...  
*We'll help you find it.*

mishons

✉ [anthony@mishons.com](mailto:anthony@mishons.com)

☎ 07850 51 08 00

94 Church Road, Hove, BN3 2EB

Monday-Friday: 8:45 am - 6 pm

Saturday: 9 am - 4 pm

Find us on Facebook and Instagram  
@wearemishons or visit [mishons.com](http://mishons.com)