



Parsonage House

Henfield, BN5 9NU

mishons

This remarkable Grade II listed manor house is steeped in local history and stands as an iconic residence dating back to the Tudor period, with later Georgian enhancements.

Nestled within the village of Henfield, a two minute stroll to the High Street, this grand property boasts over 7,000 square feet of living space, spread across three floors and two separate dwellings.

Double wrought iron electric gates open to a private driveway, providing ample parking at the front. The gardens, primarily situated to the south and west, feature secluded lawns bordered by established shrubs and trees, offering a sense of seclusion.

Exuding period charm, this exquisite home seamlessly blends historic allure with the conveniences of contemporary family living.

The house has been stylishly and lovingly refurbished where the owners modern interior style shines through. The two main reception rooms offer a welcoming and airy atmosphere, which feature exposed stripped wood flooring and presented in fabulous order.

The formal dining room features an open fireplace brimming with character and is a renowned dinner party setting. as the setting for hosting numerous dinner parties on the weekend.

An additional reception room serves as an ideal snug, allowing children to play without disrupting the serene atmosphere of the main living space. Nestled at the rear, the kitchen boasts a coveted AGA cooker and an impressive fireplace, basking in natural light and providing ample cupboard and worktop space for the demands of modern family life.

The first-floor hosts four extremely spacious bedrooms and three bathrooms, with the principal south-facing bedroom showcasing, with a stunning en-suite bathroom and walk in wardrobe. The second floor offers versatile additional bedroom/living space, with an additional room which is the perfect home office.

A remote courtyard provides access to a self-contained two-bedroom annexe with an open-plan room featuring exposed timbers and a vaulted ceiling. A perfect residence for extended family, staff or additional rental income.

The impressive gardens encompass the entire perimeter of the property, providing a tranquil sanctuary. Within this space, a private lawn awaits, which, during the summer months, can be is converted into a full-size grass tennis court. Adjacent to the driveway, an additional lawn provides further opportunity for relaxing and alfresco dining.

Parsonage House is ideally located just off Henfield's High Street, a vibrant village to the north of the South Downs. The village offers a variety of local shops, pubs, restaurants, and services, along with numerous popular events throughout the year. The area provides excellent schooling options, including Brighton College, Hurstpierpoint College, and Lancing College, all accessible via dedicated bus services from Henfield.

➤ *Asking Price* £2,500,000

7



3



5



TBC





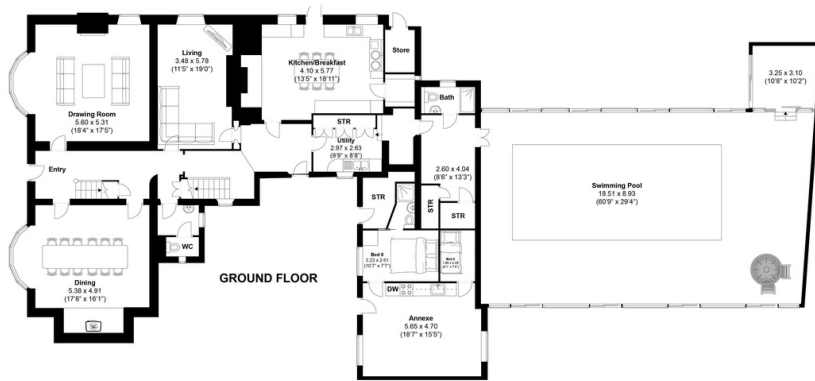




“During the Civil War, Henry Bysshop, the owner of Parsonage House, reportedly sought refuge in a secret cupboard, referred to as a ‘priest's hole’, to evade arrest.”



TOTAL FLOOR AREA:
7111 sq. ft. (660.6 sq. m.) approx



Exceptional service

We love doing what we do, so it's always done with honesty, energy, and a smile. From marketing to moving, our team is here to guide you, step-by-step, through the process of selling your home. We'll always give you honest opinions and share our local market expertise so that you'll know where you stand at every point of the journey.

Our people are a great team. All pros, brimming with experience and drive. So we promise you all focus and no faff to make sure your sale runs smoothly and hassle-free from start to completion. We'll always keep you in the loop and keep a beady eye on your chain if you're in one so that we can respond to any changes instantly.

And never forget, we're here for you at any time.

Service checklist



Personal, one-to-one service



Expert social media marketing



Honest valuations in line with current market conditions



Professionally designed and printed brochures



Ahead of the game marketing strategies



Daily sales progression



Professional photography



In-house financial advisors

Mishons & their clients give notice that:

1. These sales and particulars do not constitute any part of an offer of contract, and are for the guidance of prospective purchasers only and should not be relied on as statements of fact.
2. No representations are made in these particulars as to the condition of the property or as to whether any service or facilities are in good working order.
3. All Measurements are approximate.



Whatever you're looking for...
We'll help you find it.

✉ amy@mishons.com

☎ 07850 51 08 00

94 Church Road, Hove, BN3 2EB

Monday-Friday: 8:45 am - 6 pm

Saturday: 9 am - 4 pm

Find us on Facebook and Instagram
@wearemishons or visit mishons.com