



Aldrington Avenue

Hove, BN3

mishons

Welcome to this exquisite 4-bedroom home in a highly sought-after location, where modern elegance meets timeless charm...

The home is a stone's throw away from the popular 'Poets Corner' which hosts ample quaint coffee shops, and independent shops, not to mention a short distance to Aldington station, perfect for those who need to commute!

This residence has been thoughtfully extended downstairs, creating a bright and inviting kitchen diner that seamlessly blends style and functionality. The kitchen boasts a breakfast bar for casual dining, and the addition of bifolding doors opens up to a beautifully landscaped garden, enhancing the indoor-outdoor living experience.

The large living space, adorned with bay windows, exudes a warm and welcoming ambiance. A focal point of the room is the log burner, adding both charm and functionality for cozy evenings. Each of the four bedrooms are generously sized, offering ample space for comfortable living. The main bedroom is a true retreat with stunning bespoke built-in wardrobes and a private ensuite, providing a touch of luxury.

The property also features an additional family bathroom, ensuring convenience for residents and guests alike. Stepping outside, you'll discover a generously sized and meticulously landscaped garden, creating a private oasis for relaxation and entertainment.

One of the standout features of this property is the versatile outbuilding, complete with its own log burner. This space is a valuable addition, serving as an excellent extra bedroom, a home office, or a creative workspace – the possibilities are endless. The adaptability of this outbuilding enhances the overall appeal and functionality of the property.

Convenience is key, and this home provides ample parking, with EV charging point. Nestled in a semi-detached setting, it offers a sense of privacy while still being part of a welcoming community. This residence is not just a house; it's a haven of comfort, style, and adaptability. Don't miss the opportunity to make this property your dream home.

 *Asking Price* £750,000

4



3



2



C





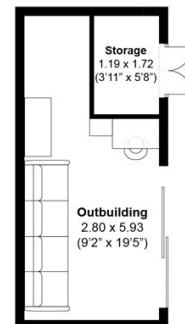
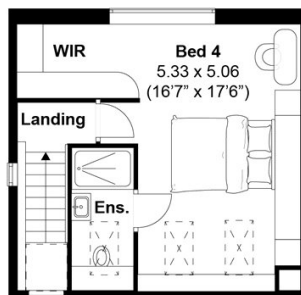
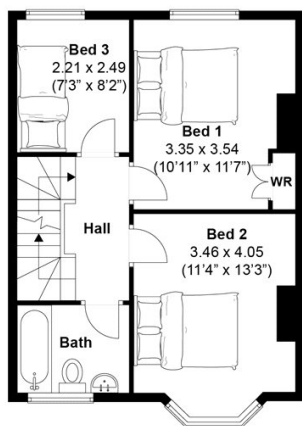
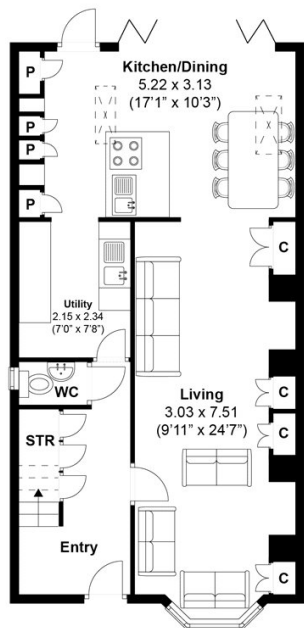




TOTAL FLOOR AREA:
1144.58 sq. ft. (106.33sq. m.) approx

Aldrington Avenue, Hove
Approximately 106.33 sqm (1144.58 sqft)

mishons



Disclaimer:
The measurements are approximate and are for illustration purposes only.
The dimensions are measured internally and in meters and feet. We do not take any responsibility for errors and/or omissions.





Whatever you're looking for...
We'll help you find it.

✉ sales@mishons.com

☎ 01273 77 88 77

94 Church Road, Hove, BN3 2EB

Monday-Friday: 8:45 am - 6 pm

Saturday: 9 am - 4 pm

Find us on Facebook and Instagram
@wearemishons or visit mishons.com

mishons

mishons.com