



# *Newtown Road*

Hove, BN3 6AB

mishons





Nestled along the sought after Newtown Road in Hove, this delightful 4 bedroom terraced house beckons with its charming allure and great condition, awaiting a new family to infuse it with life and memories.

Upon stepping inside, the abundance of natural light flooding the ground floor welcomes you warmly. Boasting two distinct reception rooms, the front lounge exudes cosiness, perfect for quiet evenings by the fireplace. Meanwhile, the rear dining room offers versatility, whether hosting formal dinners or transforming into a spacious unified area for larger gatherings.

The well appointed kitchen, boasts ample cupboard and countertop space, along with a dining area. French doors seamlessly connect the kitchen to the south-facing garden, inviting al fresco dining and leisurely afternoons basking in the sun.

Ascending to the first floor, three generously proportioned bedrooms await, complemented by a conveniently located family bathroom. Ascend further to discover the crowning jewel of the residence – a sumptuous principal suite occupying the top floor, complete with an indulgent en-suite shower.

Additionally, there is a Juliet balcony, which graces the top of the stairs, which offers the prospect of creating a rooftop terrace, subject to necessary permissions – a feature cherished by many neighbouring properties along Newtown Road.

Externally, the easily maintained garden, adorned with mature trees, provides a serene retreat for outdoor enjoyment and relaxation.

Nestled in one of Hove's most coveted areas, Newtown Road delights in its proximity to Hove Station, Church Road and the picturesque seafront, ensuring a lifestyle of convenience and coastal charm.

Don't miss the opportunity to make this enchanting residence your own and embark on a journey of refined living in one of Hove's most desirable neighbourhoods.

➤ *Guide Price*    £800,000 – £825,000

4



2



2

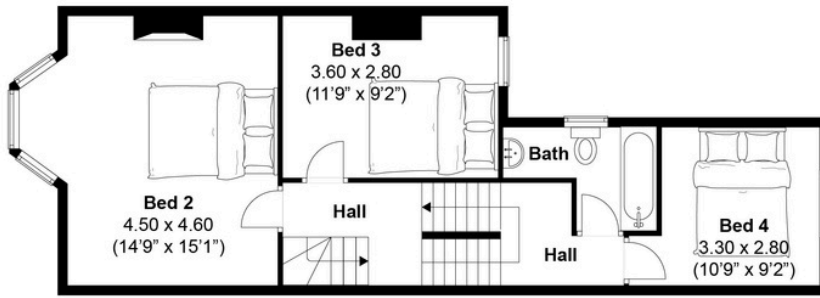


D

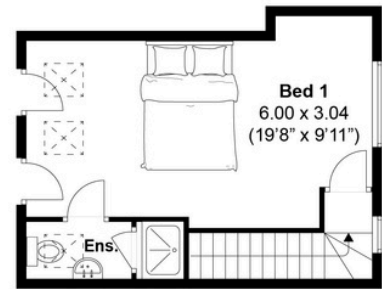




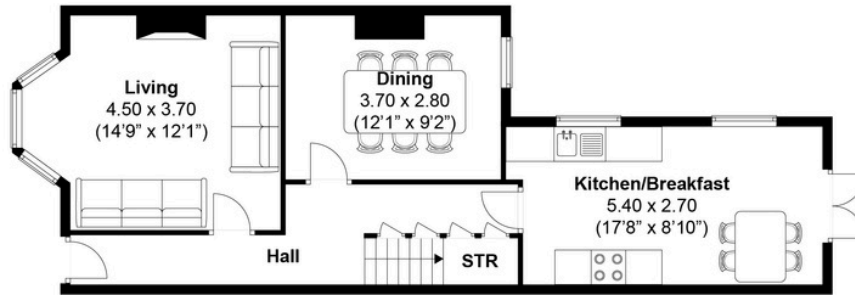
TOTAL FLOOR AREA:  
1366.15 sq. ft. (126.92 sq. m.) approx



FIRST FLOOR



SECOND FLOOR



GROUND FLOOR



**Disclaimer:**

The measurements are approximate and are for illustration purposes only.  
The dimensions are measured internally and in metres and feet. We do not take any responsibility for errors and/or omissions.  
If you require further verification please discuss with the buyer/owner of the property.







Whatever you're looking for...  
*We'll help you find it.*

mishons

✉ [sales@mishons.com](mailto:sales@mishons.com)

☎ 01273 77 88 77

94 Church Road, Hove, BN3 2EB

Monday-Friday: 8:45 am - 6 pm

Saturday: 9 am - 4 pm

Find us on Facebook and Instagram  
@wearemishons or visit [mishons.com](http://mishons.com)