



Wilbury Villas

Hove, BN3 6GD

mishons



Welcome to this charming two-bedroom apartment situated on the first floor of a period house, perfectly situated in the sought-after Wilbury Villas of Hove...

...Steeped in character and offering well proportioned living spaces, this residence presents an ideal opportunity for those seeking comfort and convenience in a prime location.

Upon entering, you're greeted by an inviting open plan living room and kitchen, bathed in natural light streaming through the main bay window. This versatile space is ideal for entertaining guests or enjoying quiet evenings at home. The apartment features two generously sized double bedrooms and a separate bathroom. Step outside to discover the pièce de resistance – a substantial west-facing garden, providing a serene space in the heart of the city.

Situated in a prime Hove location, this property boasts unrivalled access to amenities and attractions. Close proximity to the station ensures effortless commuting, while Hove Park and Hove Recreational Ground offer ample opportunities for leisure green outdoor space. Enjoy the vibrant atmosphere of this bustling Church Road district, with an array of cafes, restaurants, and shops within walking distance.

With no onward chain, this apartment presents a rare opportunity to secure a slice of Hove's coveted lifestyle with ease. Whether you're a first-time buyer, downsizer, or investor, don't miss your chance to make this delightful residence your own!

2 x



1 x



1 x



C



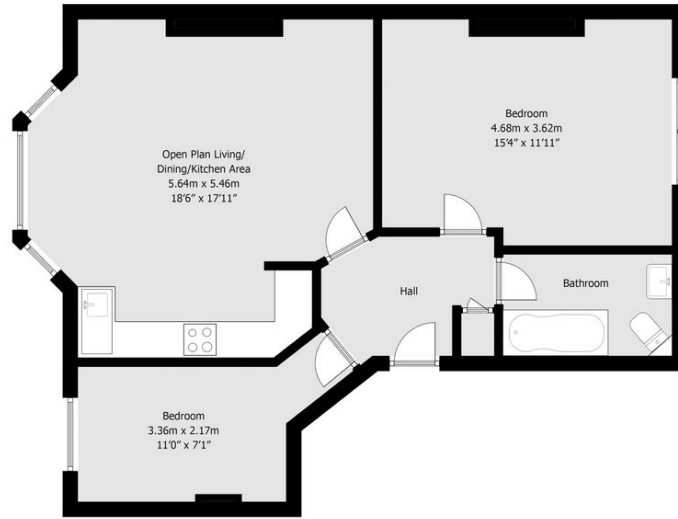
 OIEO

£375,000

TOTAL FLOOR AREA:
1868 sq. ft. (173.5 sq. m.) approx

Wilbury Villas, Hove
Approximate floor area 63.9 sq m/ 688 sq ft

mishons



Whilst every care has been taken to ensure accuracy, dimensions are approximate and for illustrative purposes only.
No responsibility is accepted for any errors and/or omissions.
Created by Property Photography UK exclusively for Mishons. All rights reserved.





Whatever you're looking for...
We'll help you find it.

mishons

✉ amy@mishons.com

☎ 07850 51 08 00

94 Church Road, Hove, BN3 2EB

Monday-Friday: 8:45 am - 6 pm

Saturday: 9 am - 4 pm

Find us on Facebook and Instagram
@wearemishons or visit mishons.com