



*North Lane*

Portslade, BN41

mishons



## Welcome to this stunning modern two bedroom bungalow, meticulously remodelled and refurbished to the highest standards, offering contemporary living at its finest.

Upon entering, you're greeted by a light and airy kitchen, carefully designed with ample worktop and cupboard space, perfect for families. The kitchen seamlessly flows into a dining area, which in turn opens out to the garden, creating an inviting space for entertaining.

The living room is a masterpiece of design, featuring double doors that can be closed to create a cosy cinema-style atmosphere or left open during the day to allow natural light and airiness to permeate the space.

This bungalow boasts two bedrooms, each with its own distinct charm. The principal bedroom exudes sophistication with its smart colour palette, while the second bedroom offers generous proportions and built-in cupboard space.

The contemporary bathroom features a fitted bath, while a separate W/C adds convenience for residents and guests alike.

Step outside onto the west-facing terrace, which is perfect for lounging, dining or hosting with friends and family.

The garage has been ingeniously split into two distinct spaces, offering versatility and functionality. The front section serves as a traditional workshop/storage area, while the rear has been transformed into a tranquil home office, ideal for remote work or creative pursuits.

The beautifully landscaped garden is a sanctuary of tranquillity, adorned with lush trees and a manicured lawn. As night falls, the garden comes to life with strategically placed lighting, creating a magical ambience.

Situated in a sought-after area, this property offers easy access to schools, cafes, supermarkets, and the A27, ensuring convenience and connectivity for residents.

Experience modern living at its finest in this immaculately presented bungalow, where every detail has been carefully considered to create a haven of comfort and style.

➤ **Guide Price**    £400,000 - £425,000

2



1



1



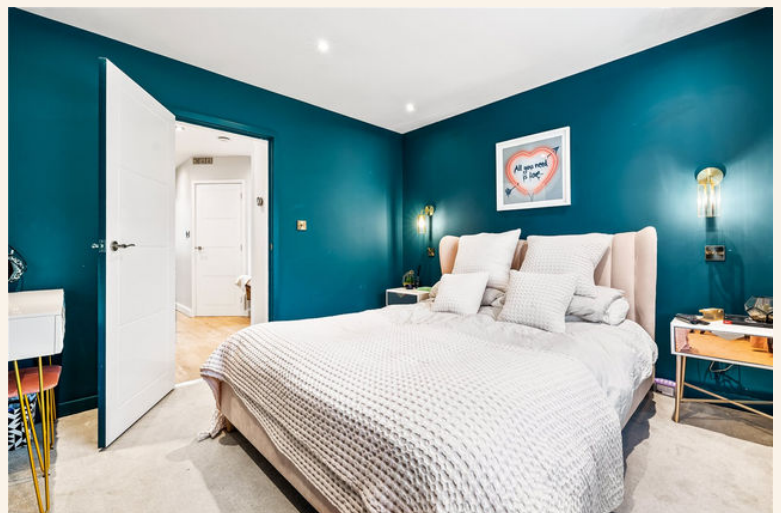
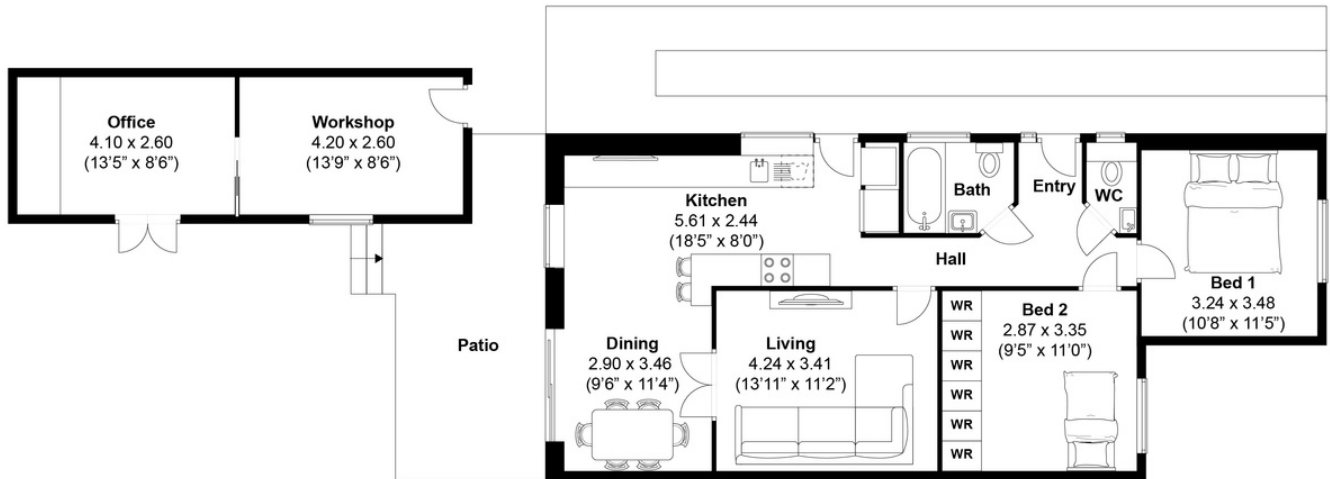
D



TOTAL FLOOR AREA:  
1064.5 sq. ft. (99 sq. m.) approx

North Lane, Brighton  
Approximately 99 sqm (1064.5 sqft)

mishons





Whatever you're looking for...  
*We'll help you find it.*

mishons

✉ [sales@mishons.com](mailto:sales@mishons.com)

☎ 01273 77 88 77

94 Church Road, Hove, BN3 2EB

Monday-Friday: 8:45 am - 6 pm

Saturday: 9 am - 4 pm

Find us on Facebook and Instagram  
@wearemishons or visit [mishons.com](http://mishons.com)