



Clifton Street

Brighton, BN1 3PH

mishons

Welcome to this charming mid-terrace house on Clifton Street.

This delightful home is in pristine condition, both inside and out, making it perfect for someone to move straight in.

As you approach the property, you'll be captivated by its handsome curb appeal, featuring a beautiful olive tree and lavender bush, which create a picturesque contrast against the crisp white facade of the building.

Upon entering, you'll be immediately impressed by the quality and character of the home, highlighted by the exquisite William Morris wallpaper and Farrow & Ball tones, that adorns the walls throughout. The main living space has been thoughtfully opened, providing an airy feel which is complemented by period detailing and an inviting open fire. These two spacious living areas seamlessly flow into the extended and well-presented kitchen.

The kitchen, designed in a charming shaker style, offers an abundance of cupboard and worktop space, making it exceptionally practical for all your culinary needs. Elevated ceiling heights and sliding glass doors, allow natural light to flood this space, creating a warm and welcoming atmosphere. Additionally, there is a utility room with a separate W/C for added convenience.

On the first floor, you'll find the family bathroom, which boasts a shower and a gorgeous roll-top bath. From here, doors lead to the garden, as do the doors from the kitchen downstairs. The first floor also hosts two bedrooms, with the main room at the front, spanning the full width of the property.

Heading to the second floor, there are two more bedrooms - the principal bedroom offers brilliant proportions and the added benefit of a recently fitted en-suite shower room. From this room, you can also enjoy lovely sea views. The loft, easily accessible, provides excellent storage, though it is not a fully functional room.

The garden can be accessed from both the kitchen and the first floor, leading to a sunny and incredibly quiet lawn area, ideal for socialising and relaxing.

Clifton Street is perfectly situated, offering the best of both worlds: a peaceful and quiet ambience while being located in the heart of town. Brighton Station, Seven Dials and Brighton city centre are all just a short walk away, making this location exceptionally convenient.

This charming mid-terrace house on Clifton Street is a perfect blend of character, practicality and location, making it an ideal home for anyone looking to enjoy the vibrant lifestyle that Brighton has to offer.

▶ *Asking Price* £1,100,000

4



2



2



D







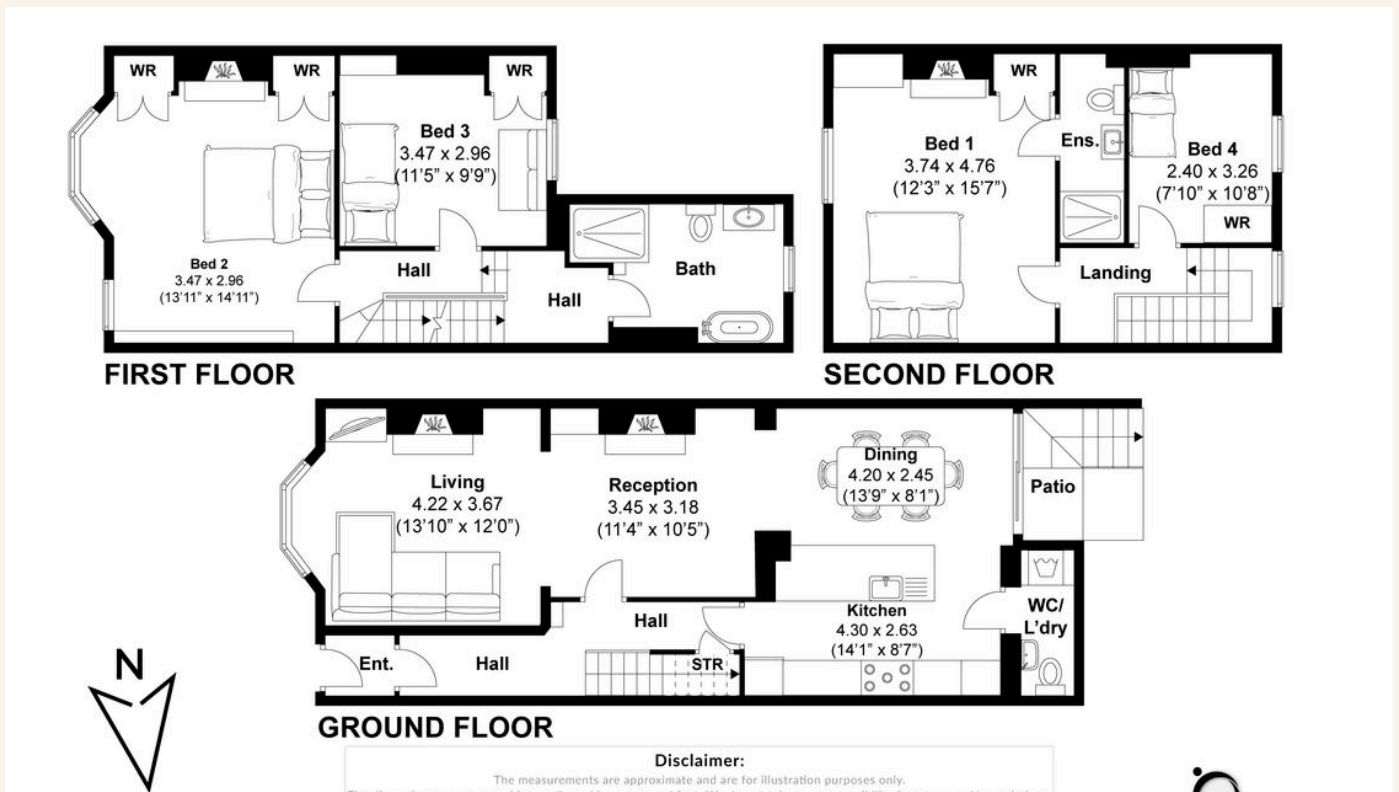


“Elevated ceiling heights and sliding glass doors, allow natural light to flood this space, creating a warm and welcoming atmosphere” ...



TOTAL FLOOR AREA:

1510.62 sq. ft. (140.34 sq. m.) approx



Exceptional service

We love doing what we do, so it's always done with honesty, energy, and a smile. From marketing to moving, our team is here to guide you, step-by-step, through the process of selling your home. We'll always give you honest opinions and share our local market expertise so that you'll know where you stand at every point of the journey.

Our people are a great team. All pros, brimming with experience and drive. So we promise you all focus and no faff to make sure your sale runs smoothly and hassle-free from start to completion. We'll always keep you in the loop and keep a beady eye on your chain if you're in one so that we can respond to any changes instantly.

And never forget, we're here for you at any time.

Service checklist



Personal, one-to-one service



Expert social media marketing



Honest valuations in line with current market conditions



Professionally designed and printed brochures



Ahead of the game marketing strategies



Daily sales progression



Professional photography



In-house financial advisors

Mishons & their clients give notice that:

1. These sales and particulars do not constitute any part of an offer of contract, and are for the guidance of prospective purchasers only and should not be relied on as statements of fact.
2. No representations are made in these particulars as to the condition of the property or as to whether any service or facilities are in good working order.
3. All Measurements are approximate.



Whatever you're looking for...
We'll help you find it.

✉ harry@mishons.com

☎ 07495 69 51 20

94 Church Road, Hove, BN3 2EB

Monday-Friday: 8:45 am - 6 pm

Saturday: 9 am - 4 pm

Find us on Facebook and Instagram
@wearemishons or visit mishons.com