



The Chrome Works

Hove, BN3

mishons



Welcome to Chrome Works, Hove...

an exceptional building that offers modern living at its finest. This stunning property boasts two spacious bedrooms, perfect for a small family or professionals seeking a comfortable and stylish home. The master bedroom features an en suite bathroom, providing a private sanctuary for relaxation and convenience.

The heart of the home is the large open-plan kitchen and living area. Designed with contemporary aesthetics and functionality in mind, the kitchen is equipped with integrated modern appliances and ample storage space. The living area flows seamlessly onto a spacious balcony, ideal for entertaining guests or enjoying peaceful moments with a view.

Adding to the convenience, The Chrome Works features a lift, ensuring easy access to all floors and making daily living hassle-free. The property also benefits from underfloor heating, providing warmth and comfort throughout the home. With its modern finish and attention to detail, this property epitomizes luxury and comfort.

Located in an up-and-coming area of Hove, The Chrome Works offers more than just a beautiful home. The neighborhood is experiencing rapid development, with new shops, cafes, and amenities continually enhancing the community. Excellent transport links, including a short walk to the station, provide easy access to the city center and beyond, making it an ideal location for both work and leisure. On-street parking permits are available on application, adding an extra layer of convenience for residents.

Significantly, The Chrome Works was the first phase in the regeneration of the Hove Station Quarter. This pioneering development set the standard for the area's transformation, blending modern architecture with the rich heritage of the community. Experience the best of Hove living at The Chrome Works, where every detail has been carefully crafted to meet your highest expectations.

➤ *Guide Price* £400,000 - £425,000

2



1



2



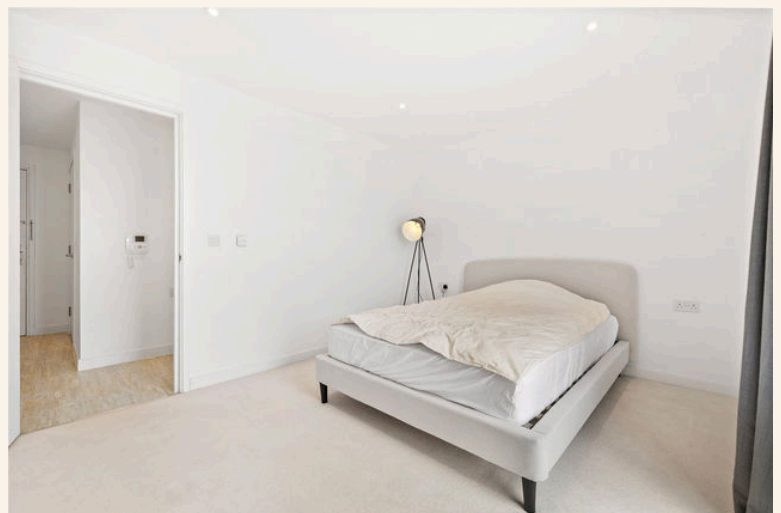
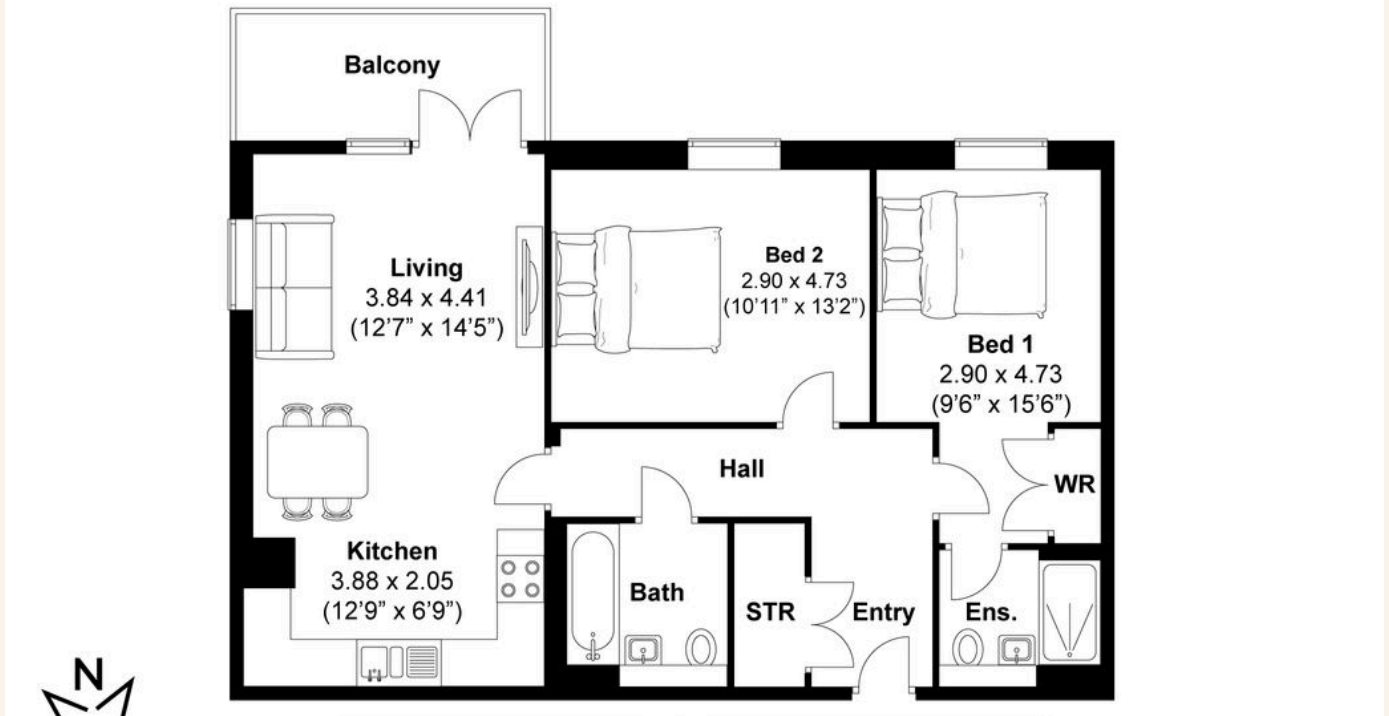
B



TOTAL FLOOR AREA:
878.6 sq. ft. (82 sq. m.) approx

Goldstone Lane, Hove
Approximately 82 sqm (878.6 sqft)

mishons





Whatever you're looking for...
We'll help you find it.

mishons

✉ sales@mishons.com

☎ 01273 77 88 77

94 Church Road, Hove, BN3 2EB

Monday–Friday: 8:45 am – 6 pm

Saturday: 9 am – 4 pm

Find us on Facebook and Instagram
@wearemishons or visit mishons.com