



# *Palmeira Avenue*

Hove, BN3

mishons



## Set on one of the most desirable roads in Hove...

this first floor one bedroom mansion flat with a balcony and communal roof terrace. This property also comes with a single garage and parking in front of the garage!

As you enter the property the bathroom is directly in front of you, this room needs minor updating but has lots of potential. To the right off the entrance hall is the superb living room. With the high ceilings which you would expect from a fabulous Victorian residence you have the potential to make this a really impressive room. There is plenty of room for a large dining area too.

The kitchen then leads off the living room and has plenty of cupboard space and work surface area for meal prep. The balcony then is off the kitchen and spans the full width of the first floor. This is great spot to enjoy a morning coffee in the sun.

The bedroom is also a really substantial room and again, has the ceiling height which lets in so much natural light.

A door then leads from the bedroom to a communal roof terrace if buyers wanted to take advantage of a large outside space than your private balcony.

The property comes with a garage which helps with tons of storage and then there is a private parking space in front of the garage.

➤ *Guide Price*    **£350,000**

1



1



1

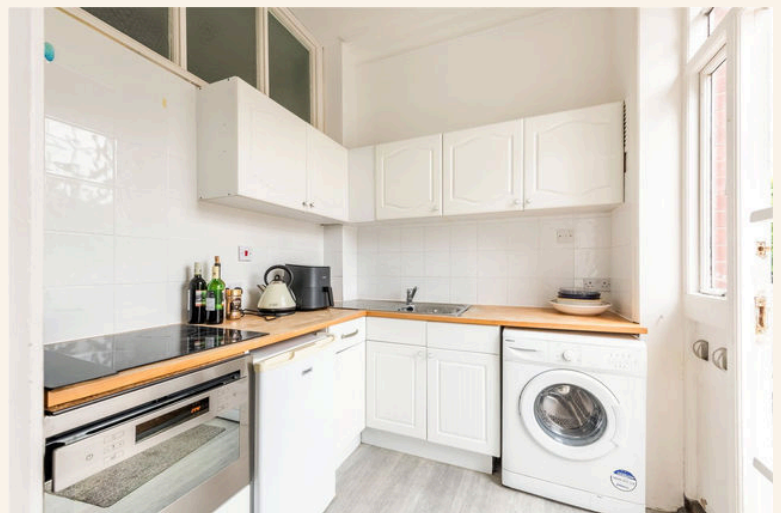
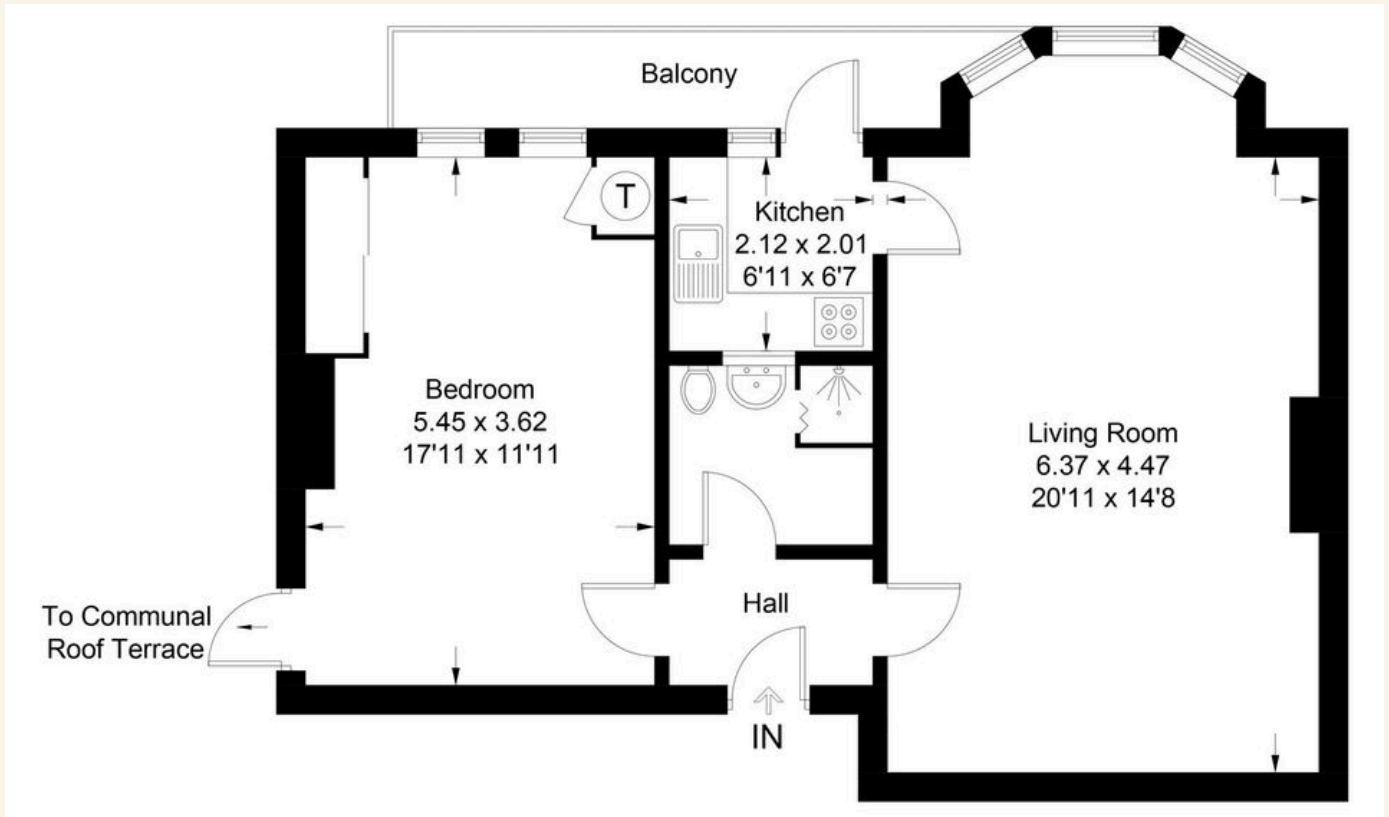


E



**TOTAL FLOOR AREA:**

688sqft / 63.9 sqm approx.





Whatever you're looking for...  
*We'll help you find it.*

mishons

✉ [sales@mishons.com](mailto:sales@mishons.com)

☎ 01273 77 88 77

94 Church Road, Hove, BN3 2EB

Monday-Friday: 8:45 am - 6 pm

Saturday: 9 am - 4 pm

Find us on Facebook and Instagram  
@wearemishons or visit [mishons.com](http://mishons.com)