



# *Cliveden Court*

Brighton, BN1

mishons





## Located in the sought-after Preston Park area of Brighton...

Cliveden Court presents a charming two-bedroom flat perfect for those looking to immerse themselves in this vibrant area. This well-appointed residence features two generously sized bedrooms, providing ample space for relaxation and comfort.

The property boasts a separate kitchen, ideal for culinary enthusiasts, and a large living room that invites natural light, creating a warm and welcoming atmosphere. The bathroom is conveniently designed to meet all your needs.

Cliveden Court's prime location is a commuter's dream, with Preston Park Station just a short stroll away, offering direct links to London. Additionally, easy access to the A23 and A27 ensures seamless connectivity to the surrounding areas.

Whether you're a first-time buyer, investor, or looking to downsize, this flat offers a fantastic opportunity to create a personalized living space in one of Brighton's most desirable neighborhoods. Embrace the chance to paint your blank canvas in this wonderful location.

➤ *Asking Price* £270,000

2



1



1



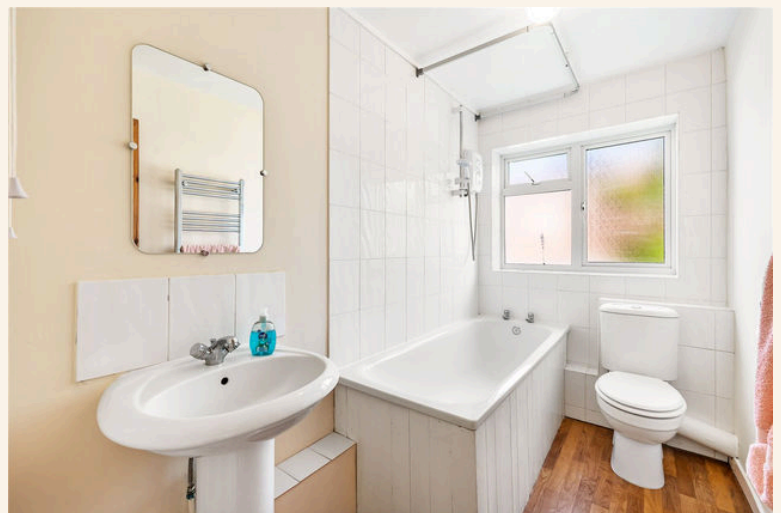
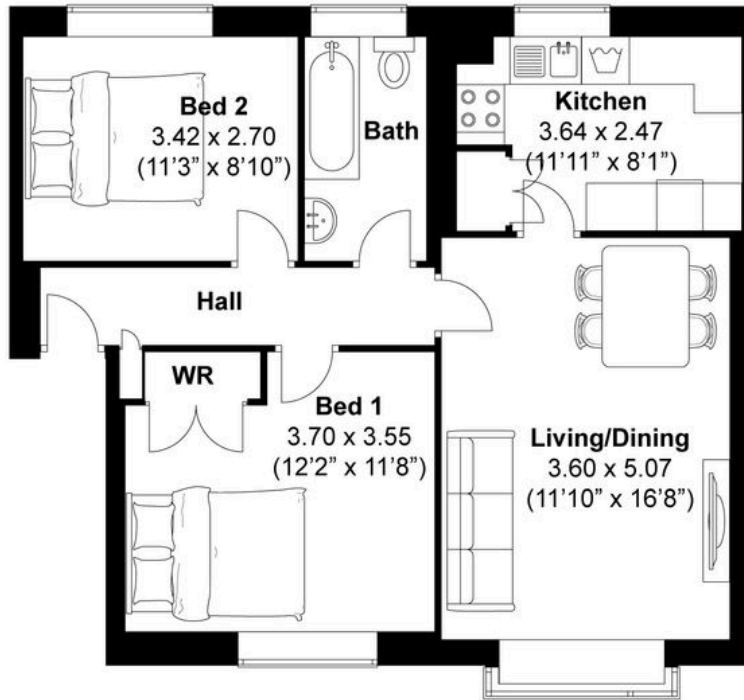
C



TOTAL FLOOR AREA:  
667.23 sq. ft. (62 sq. m.) approx

Cliveden Close, Brighton  
Approximately 62 sqm (667.23 sqft)

mishons





Whatever you're looking for...  
*We'll help you find it.*

mishons

✉ [sales@mishons.com](mailto:sales@mishons.com)

☎ 01273 77 88 77

94 Church Road, Hove, BN3 2EB

Monday-Friday: 8:45 am - 6 pm

Saturday: 9 am - 4 pm

Find us on Facebook and Instagram  
@wearemishons or visit [mishons.com](http://mishons.com)