



# *Clifton Terrace*

Brighton, BN1

mishons



## Welcome to Clifton Terrace, Brighton, where we present a stunning scenic upper maisonette in one of Brighton's most prestigious and sought-after locations...

This unique property offers an exceptional living experience, combining elegant design, ample space, and breathtaking views.

As you step through the front door, you are immediately welcomed by the well-equipped kitchen. This culinary haven not only boasts modern appliances and plenty of counter space but also showcases stunning views of the south west side of the city, making meal preparation a delightful experience.

Ascending to the next level, you will find a generously sized double bedroom. This inviting room offers an abundance of natural light and ample storage space, ensuring that all your belongings are neatly organized. The bedroom provides a tranquil retreat, perfect for restful nights and lazy Sunday mornings.

Adjacent to the bedroom is the living/dining room, a beautifully finished space featuring an exposed brick wall that adds a touch of character and warmth. This versatile room is spacious enough to accommodate a good-sized dining table, ideal for entertaining guests, as well as a compact office area for those who work from home.

Continuing up to the next floor, you are greeted by a luxurious bathroom. This elegant space benefits from a freestanding roll-top bath, perfect for indulgent soaks, and a separate shower for added convenience. The bathroom shares the same stunning west-facing views as the kitchen, providing a serene backdrop for your daily routines.

On the mezzanine level, you discover a cozy nook that is perfect for relaxation. This area offers an ideal spot to unwind with a good book or simply enjoy some quiet time. From here, you can step outside to the roof terrace, a true highlight of the property. The terrace offers panoramic views of the city and the sea, creating an extraordinary outdoor space for entertaining, dining al fresco, or simply soaking up the sun.

In addition to the ample storage within the property, there is also extra space on the other side of the roof terrace, ensuring that all your storage needs are met. This property on Clifton Terrace truly combines the best of city living with the tranquility of a scenic retreat, making it a perfect home for those seeking both comfort and elegance.

➤ *Guide Price*    £375,000 - £400,000

1



2



1



D



**TOTAL FLOOR AREA:**

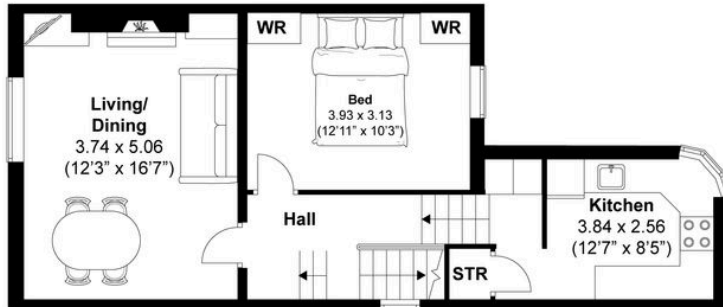
1038 sq. ft. (96.44 sq. m.) approx

Clifton Terrace, Brighton  
Approximately 96.44 sqm (1038 sqft)

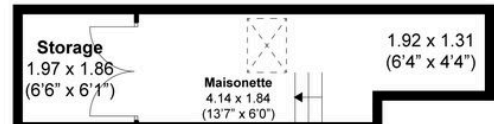
mishons



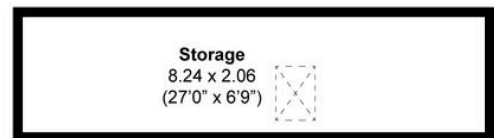
**THIRD FLOOR**



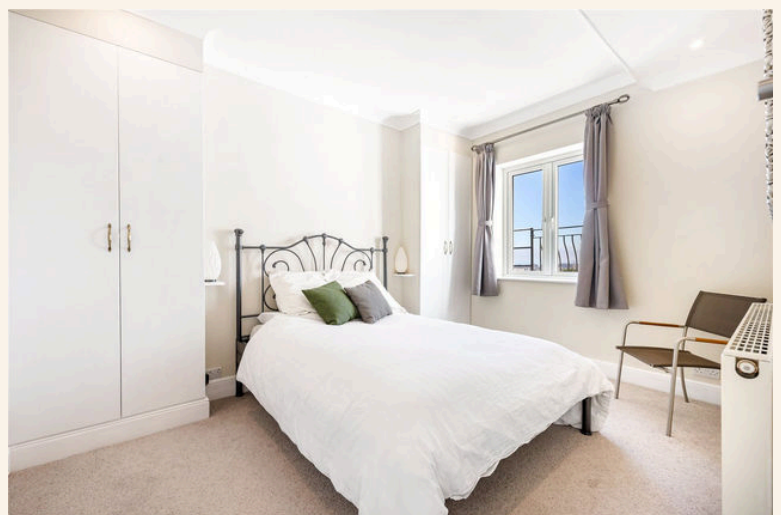
**SECOND FLOOR**



**UPPER FLOOR**



**(NOT IN POSITION)**





Whatever you're looking for...  
*We'll help you find it.*

mishons

✉ [sales@mishons.com](mailto:sales@mishons.com)

☎ 07495 69 51 20

94 Church Road, Hove, BN3 2EB

Monday-Friday: 8:45 am - 6 pm

Saturday: 9 am - 4 pm

Find us on Facebook and Instagram  
@wearemishons or visit [mishons.com](http://mishons.com)