



# *Salisbury Road*

Hove, BN3

mishons



## Located in the heart of Hove...

... this delightful one bedroom apartment which has a share in the freehold. This property also comes chain free!

As you enter the apartment via the communal areas that have been kept to a really lovely standard, you walk into the property with space for coats and shoes in the hallway.

The bathroom is to your left and is modern and spacious. The large bedroom is to your right off the hallway and overlooks the tree lined street of Salisbury Road. This bedroom is a great size and plenty of space for storage too.

The living area has space for a tv area and dining area and would be a nice place to host friends and family. The natural light in this room is impressive. The kitchen area has an open plan feel to the living room but is tucked away nicely. There is ample storage and work surface space in the kitchen.

Salisbury Road is set just off the popular Palmeira Square right in the centre of Hove with all the popular cafes and restaurants just a stone's throw away. The seafront is a five-minute walk away and the mainline station is only a 15-minute walk away so perfect if you need direct trains to London.

➤ *Guide Price* £290,000

1



1



1

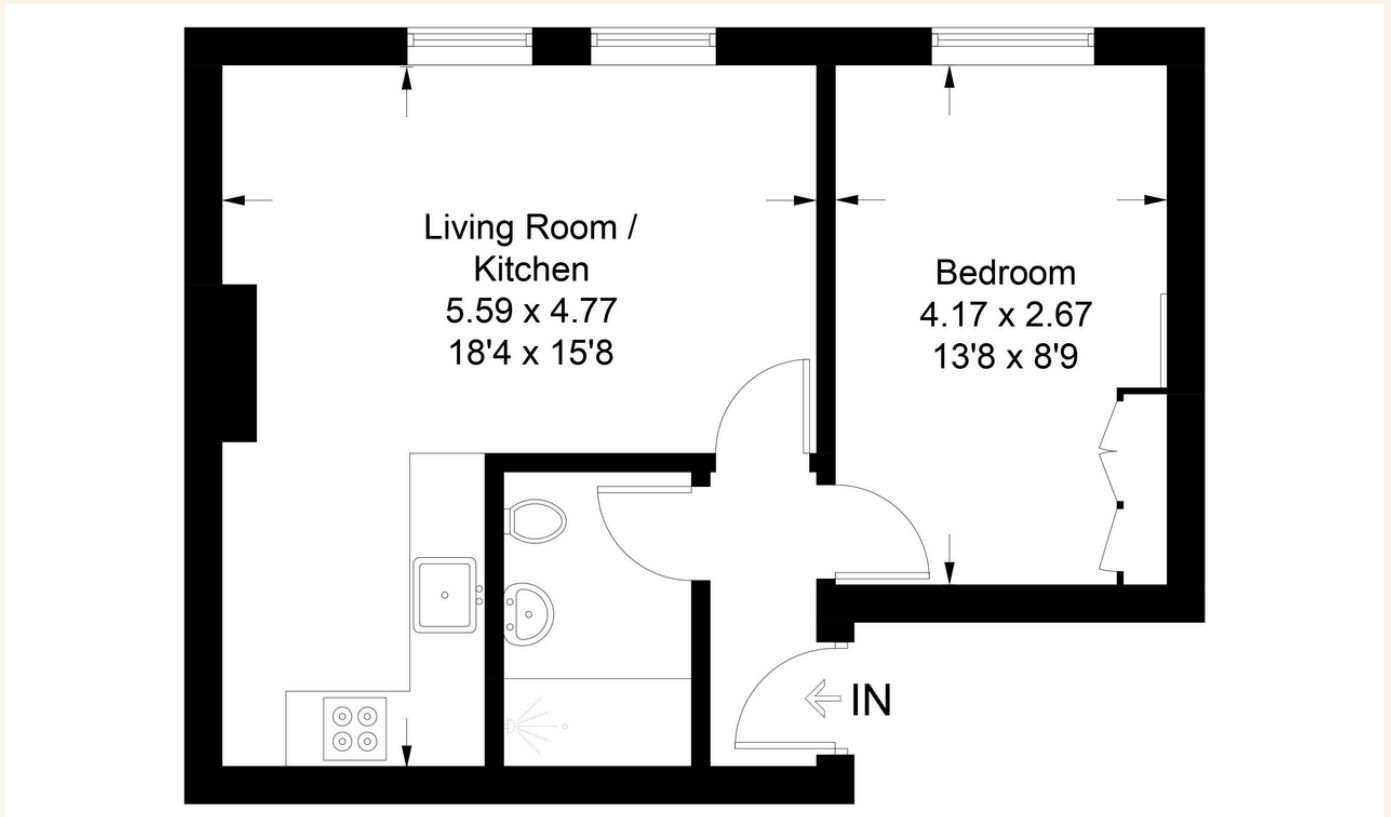


TBC



**TOTAL FLOOR AREA:**

38.3 sqm/ 412 sqft approx.





Whatever you're looking for...  
*We'll help you find it.*

mishons

✉ [sales@mishons.com](mailto:sales@mishons.com)

☎ 01273 77 88 77

94 Church Road, Hove, BN3 2EB

Monday-Friday: 8:45 am - 6 pm

Saturday: 9 am - 4 pm

Find us on Facebook and Instagram  
@wearemishons or visit [mishons.com](http://mishons.com)