



# *Winfield Avenue*

Brighton, BN1

mishons



Located in the popular Patcham area this stunning four-bedroom detached home finished to the highest of standards that is also being sold chain free...

As you enter the property you are greeted by a spacious hallway with plenty of space for coats and shoes. The versatile accommodation spans across two floors, offering ample space for comfortable family living. The property features a brand-new heating system and electrical wiring, ensuring modern convenience and efficiency.

The hub of the home lies in the bespoke kitchen/diner. Boasting integrated Bosch appliances, composite worktops and a beautiful kitchen island. The dining space leads seamlessly from the kitchen with large bi-fold doors taking you straight out to the landscaped rear garden. There is also a living room to the front of the property perfect for a quiet day in front of the sofa.

The property has four double bedrooms, one on the ground floor and three on the first floor. The three uniquely designed bath/shower rooms offer a luxurious retreat.

Outside, the private rear garden is a great size for a young family and easy to maintain for downsizers, ideal for outdoor enjoyment and entertaining guests. With handy side access, this space provides convenience and privacy for your enjoyment. Parking is made easy with the new driveway and a garage.

4



1



3



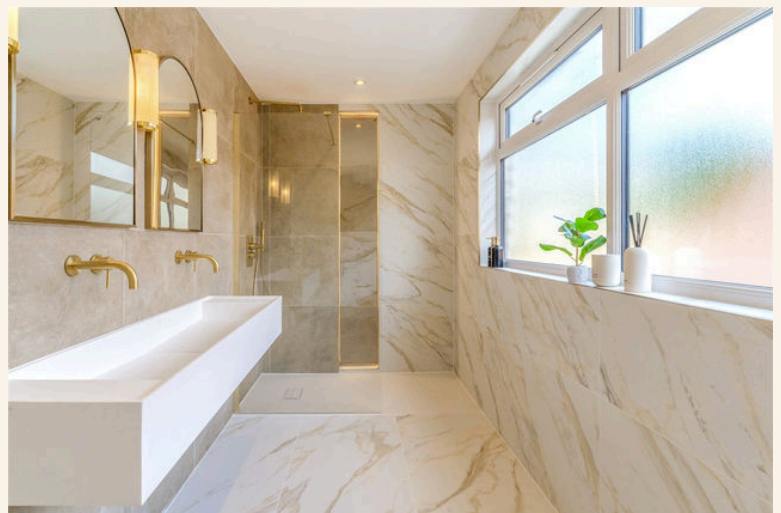
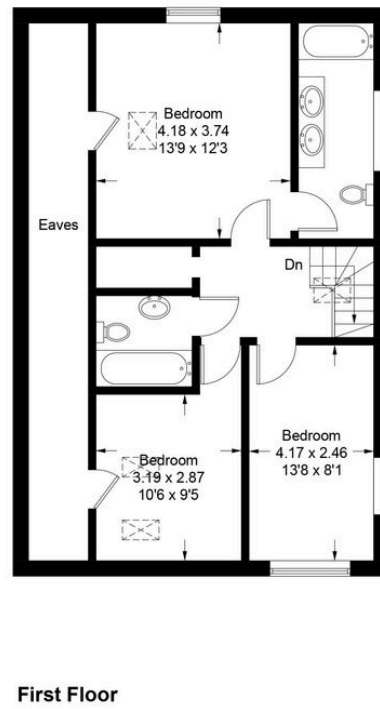
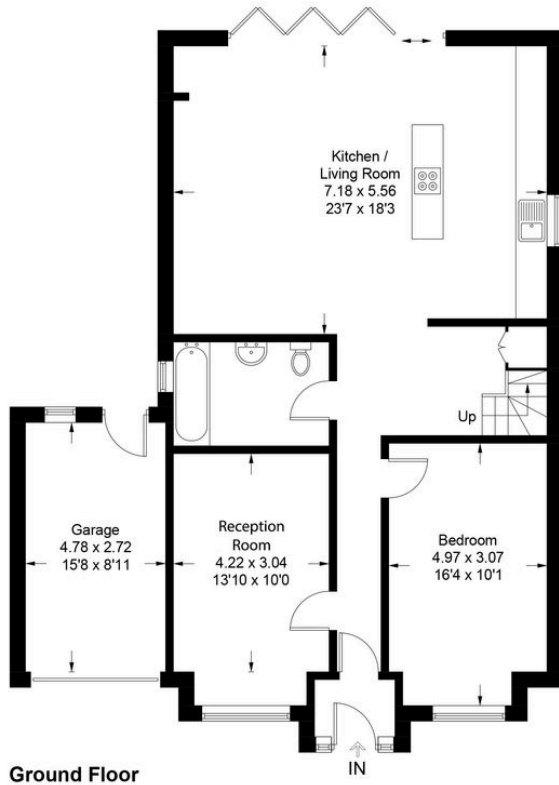
D



Guide Price £780,000 - £820,000



TOTAL FLOOR AREA:  
1711.46 sq. ft. (159 sq. m.) approx







Whatever you're looking for...  
*We'll help you find it.*

mishons

✉ [sales@mishons.com](mailto:sales@mishons.com)

☎ 01273 77 88 77

94 Church Road, Hove, BN3 2EB

Monday-Friday: 8:45 am - 6 pm

Saturday: 9 am - 4 pm

Find us on Facebook and Instagram  
@wearemishons or visit [mishons.com](http://mishons.com)