



Lansdowne Place

Hove, BN3

mishons



Located on Lansdowne Place in central Hove...

this beautiful two double bedroom top-floor maisonette offers an ideal combination of space, style, and convenience. As you enter the property, you are greeted by a spacious separate kitchen, perfect for culinary enthusiasts. This level also features a well-appointed bathroom, providing essential amenities for residents and guests.

Ascending to the next level, you will find a stunning living room adorned with charming sash windows. The generous size of this space makes it the perfect spot to unwind after a long day or entertain guests in style. The natural light that floods the room enhances its welcoming atmosphere.

Up a small flight of stairs, you will discover the principal dual-aspect bedroom. This room, along with the second bedroom, features built-in storage, ensuring ample space for all your belongings. Both bedrooms are designed to provide comfort and tranquility, making them ideal retreats at the end of the day.

This top-floor maisonette on Lansdowne Place offers a wonderful blend of elegant period features and convenience, set in a prime central Hove location. Its proximity to local amenities, shops, cafes, and transport links makes it an excellent choice for those looking to enjoy the vibrant lifestyle that Hove has to offer.

➤ *Guide Price* £400,000 - £450,000

2



1



1

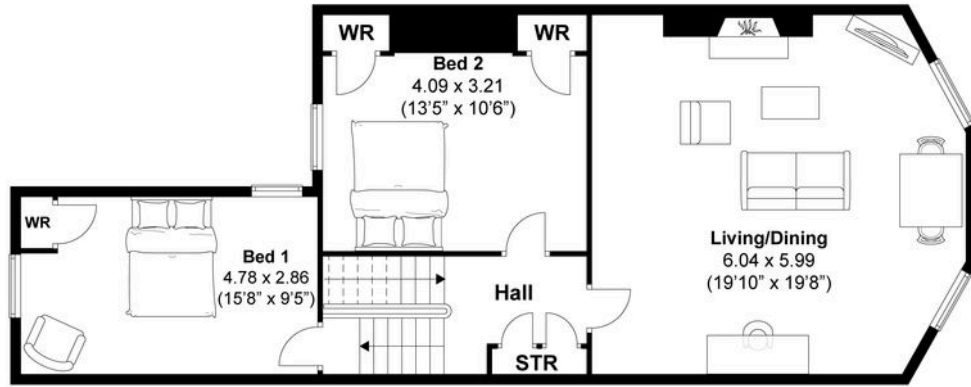


C

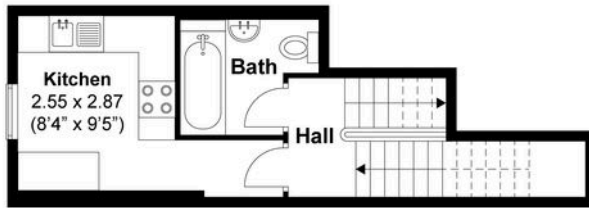


TOTAL FLOOR AREA:

92 sqm/991 sqft approx.



THIRD FLOOR



SECOND FLOOR



FIRST FLOOR





Whatever you're looking for...
We'll help you find it.

mishons

✉ sales@mishons.com

☎ 01273 77 88 77

94 Church Road, Hove, BN3 2EB

Monday-Friday: 8:45 am - 6 pm

Saturday: 9 am - 4 pm

Find us on Facebook and Instagram
@wearemishons or visit mishons.com