



Brunswick Terrace

Hove, BN3 1HJ

mishons

Presenting a stunning three-bedroom raised ground floor apartment in the prestigious Brunswick Terrace of Hove...

... this exquisite property offers a blend of period charm and contemporary luxury. Set within a popular Grade I listed Regency terrace directly on the Hove seafront, this home has fabulous sea views and an exceptional standard of living.

The highlight of the apartment is the expansive reception room, which features impressive high ceilings, elegant period detailing, and a magnificent marble feature fireplace. Original ceiling roses and cornicing add to the grandeur of this space, while large windows provide direct views of the sea, making it a perfect spot for relaxation or entertaining. Adjoining the reception room is a stunning, modernised open kitchen area with a central island, equipped with high-specification fittings. The kitchen leads into a unique rear seating area, beautifully set within an original bay window, creating a charming nook to enjoy morning coffee or casual dining.

Leading to the rear of the property, a luxurious family bathroom showcases the same attention to detail with high-end fittings. The apartment features three spacious double bedrooms, each offering comfort and privacy. The principal suite, located at the far end of the home, includes a sleek en-suite shower room, providing a private sanctuary.

The property is ideally positioned within easy reach of the vibrant Church Road and Western Road shopping facilities, known for their array of restaurants, boutiques, and cafes. This elegant apartment is being sold with no onward chain, making it a perfect choice for those looking to move quickly.

With its unbeatable location, stunning sea views, and an exceptional blend of period elegance and modern comfort, this property is a rare find on the Hove seafront. Don't miss this opportunity to own a piece of Regency history in one of Hove's most sought-after addresses.

 **Guide Price** £1,100,000

3



1



2



N/A









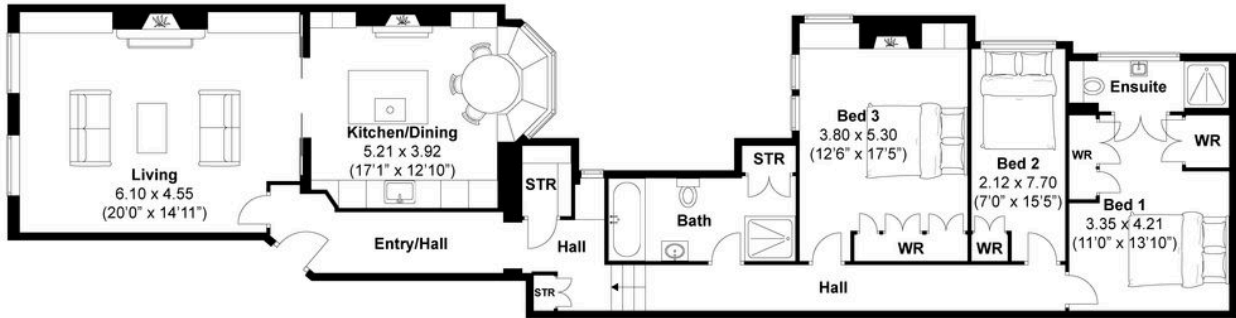
High quality finishes...



TOTAL FLOOR AREA:
1466.8 sq. ft. (136.27 sq. m.) approx

Brunswick Terrace, Hove
Approximately 136.27 sqm (1466.8 sqft)

mishons



mishons

Exceptional service

We love doing what we do, so it's always done with honesty, energy, and a smile. From marketing to moving, our team is here to guide you, step-by-step, through the process of selling your home. We'll always give you honest opinions and share our local market expertise so that you'll know where you stand at every point of the journey.

Our people are a great team. All pros, brimming with experience and drive. So we promise you all focus and no faff to make sure your sale runs smoothly and hassle-free from start to completion. We'll always keep you in the loop and keep a beady eye on your chain if you're in one so that we can respond to any changes instantly.

And never forget, we're here for you at any time.

Service checklist



Personal, one-to-one service



Expert social media marketing



Honest valuations in line with current market conditions



Professionally designed and printed brochures



Ahead of the game marketing strategies



Daily sales progression



Professional photography



In-house financial advisors

Mishons & their clients give notice that:

1. These sales and particulars do not constitute any part of an offer of contract, and are for the guidance of prospective purchasers only and should not be relied on as statements of fact.
2. No representations are made in these particulars as to the condition of the property or as to whether any service or facilities are in good working order.
3. All Measurements are approximate.



Whatever you're looking for...
We'll help you find it.

✉ amy@mishons.com

☎ 07850 51 08 00

94 Church Road, Hove, BN3 2EB

Monday-Friday: 8:45 am - 6 pm

Saturday: 9 am - 4 pm

Find us on Facebook and Instagram
@wearemishons or visit mishons.com