



Victoria Street

BN1 3FP

mishons



mishons
Virtual Stager

Nestled in the heart of the sought-after Clifton Hill area, this delightful mid-terraced house on Victoria Street offers a unique opportunity to own a charming property in one of Brighton's most distinguished neighbourhoods. Chain-free and ready for you to move in, this two-bedroom home is perfect for those seeking a blend of comfort and convenience.

The property is arranged over two spacious floors. On the ground floor, you'll find a double-length reception room bathed in natural light throughout the day, creating a warm and inviting atmosphere. The living area is perfect for relaxation, where you can easily envision two large sofas, coffee table and bookshelves filling the space. To the rear, the room seamlessly transitions into a fantastic dining area, ideal for entertaining friends and family. From here, doors lead out to your private rear garden—a true suntrap during the warmer months, offering a wonderful sense of openness rather than feeling hemmed in by surrounding properties.

The galley kitchen is in excellent working order, boasting ample countertop and surface space, making meal preparation a breeze. A door from the kitchen also provides access to the garden, perfect for al fresco dining or enjoying your morning coffee in the fresh air.

Upstairs, the first floor comprises a large family bathroom, thoughtfully designed with both a shower and a bath, catering to all your needs. Both bedrooms are well-presented, with the principal bedroom spanning the full width of the house, offering a generous and comfortable space to retreat at the end of the day.

Victoria Street is a fabulous road within the Clifton Hill conservation area, known for its historic charm and proximity to Brighton's vibrant city centre. With Brighton Station just a short walk away, this location is perfect for commuters and those who want to enjoy the best of city living.

Don't miss the chance to make this wonderful property your new home.

➤ *Guide Price* £800,000 - £825,000

2



2



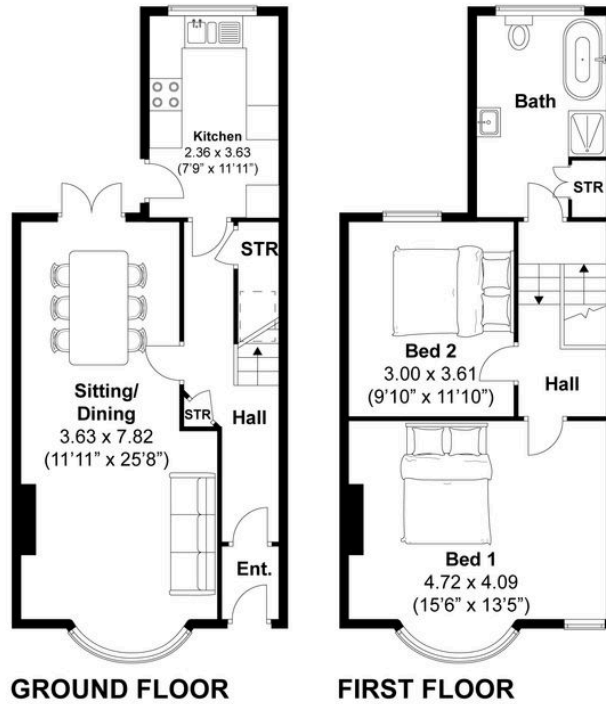
1



#



TOTAL FLOOR AREA:
945 sq. ft. (87.8 sq. m.) approx



Disclaimer:

The measurements are approximate and are for illustration purposes only. The dimensions are measured internally and in metres and feet. We do not take any responsibility for errors and/or omissions. If you require further verification please discuss with the buyer/owner of the property.





Whatever you're looking for...
We'll help you find it.

mishons

✉ sales@mishons.com

☎ 01273 77 88 77

94 Church Road, Hove, BN3 2EB

Monday-Friday: 8:45 am - 6 pm

Saturday: 9 am - 4 pm

Find us on Facebook and Instagram
@wearemishons or visit mishons.com