



Sillwood Court

Brighton, BN1

mishons



Welcome to Sillwood Court, a charming and spacious two double-bedroom flat...

Situated in the very heart of Brighton, offering an exceptional blend of city living and coastal tranquility. This delightful residence is perfectly positioned to enjoy all the vibrant culture, dining, and entertainment that Brighton is renowned for, while providing a peaceful retreat with stunning views.

Upon entering the flat, you are immediately struck by the sense of space and light that defines this home. The large living room is the perfect place to relax or entertain, with ample room for comfortable seating and dining areas. This inviting space is enhanced by its direct access to a private balcony, where you can step outside and enjoy panoramic views of the iconic i360 observation tower and glimpses of the sparkling sea. Whether you're sipping your morning coffee or winding down in the evening, this balcony offers a serene escape from the hustle and bustle of city life.

The kitchen, separate from the living area, is thoughtfully designed and well-equipped, featuring modern appliances and plenty of counter space for preparing meals. Whether you're cooking a quick breakfast or hosting a dinner party, this kitchen has everything you need to create culinary delights.

The principal bedroom is a true sanctuary, offering generous proportions that easily accommodate a double bed, wardrobes, and a dressing table. One of the standout features of this bedroom is the stunning sea views that greet you as you look down the charming street.

The second bedroom, also a good-sized double, offers flexibility to be used as a guest room, home office, or additional storage space, depending on your needs. The flat is completed by a beautifully appointed bathroom, featuring contemporary fixtures and fittings, providing a luxurious space to unwind after a long day.

Sillwood Court's prime location means you're just a short stroll away from Brighton's famous seafront, eclectic shops, and diverse array of restaurants and cafes. Public transport links are excellent, with Brighton Station nearby, making commuting or exploring the wider area effortless.

This flat is not just a home, but a lifestyle opportunity, offering the best of Brighton right at your doorstep. Whether you're a professional looking for a stylish city base, a couple seeking a spacious home, or anyone in between, Sillwood Court is sure to impress. Don't miss the chance to make this exceptional property your own.

➤ *Guide Price* **£425,000**

2



2



1



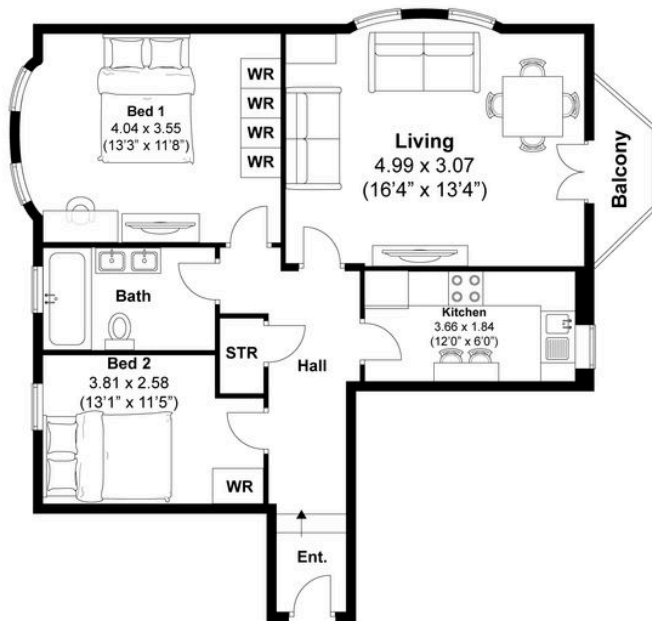
TBC



TOTAL FLOOR AREA:
773.57 sq. ft. (71.87 sq. m.) approx

Montpelier Road, Brighton
Approximately 71.87 sqm (773.57 sqft)

mishons





Whatever you're looking for...
We'll help you find it.

mishons

✉ sales@mishons.com

☎ 01273 77 88 77

94 Church Road, Hove, BN3 2EB

Monday–Friday: 8:45 am – 6 pm

Saturday: 9 am – 4 pm

Find us on Facebook and Instagram
@wearemishons or visit mishons.com