



# *Montpelier Crescent*

BN1 3JJ

mishons

# Welcome to this rare opportunity to own a stunning whole house on Montpelier Crescent, one of Brighton's most distinguished addresses...

This Grade II listed property masterfully combines the elegant period charm of the Regency era with a sophisticated blend of contemporary interior design, offering a lifestyle of luxury and convenience.

As you enter through the grand front door, you are greeted by a spacious and inviting hallway that sets the tone for the rest of the home. The ground floor features a magnificent reception room, where high ceilings and floor-to-ceiling sash windows flood the space with natural light, with a charming balcony that provides the perfect spot for a morning coffee or evening relaxation. The centre-piece of the room is a striking feature fireplace, surrounded by tastefully selected neutral tones and exquisite furnishings that enhance the room's refined ambiance.

Adjacent to the living room is a beautifully appointed kitchen, equipped with high-end Miele appliances and exceptional craftsmanship. The kitchen offers ample worktop and surface space, complemented by picturesque views of the lush private garden, a true oasis of tranquillity. This floor also includes a convenient W/C and additional storage.

Ascending the staircase, you'll pass a stunning window that bathes the space in natural light, making a statement in its own right. The first floor offers two versatile bedrooms, one of which is currently utilised as an additional living room, showcasing the home's adaptability. This front room spans the full width of the house, serving as either a luxurious principal living area or a magnificent main bedroom.

On the top floor, you'll find two more beautifully designed bedrooms and bathrooms. The primary suite is a sanctuary, featuring a walk-in wardrobe leading to a spacious en-suite bathroom, embodying the elegance and comfort expected in a home of this calibre. The additional bedroom is generously sized and complemented by a recently updated shower room.

The basement level, accessible from the ground floor, reveals an incredible additional living space with endless possibilities. Whether used for entertaining, guest accommodation, or even converted into a self-contained apartment, this area is equipped with all the necessary amenities. From here, you can access the serene, private garden, which can also be reached from the ground floor, offering year-round enjoyment in a secure and secluded setting.

Montpelier Crescent is recognised as one of Brighton's finest residential areas, offering easy access to Brighton Station and the vibrant amenities of 7 Dials, including artisan bakeries, charming pubs, and popular restaurants. This property is not just a home but a lifestyle, promising unparalleled sophistication and convenience in one of the city's most sought-after locations. Don't miss the chance to make this exceptional house your new home.

▶ *Asking Price £2,100,000*

---

4



3



3



#















“surrounded by tastefully selected neutral tones and exquisite furnishings that enhance the room's refined ambiance...”

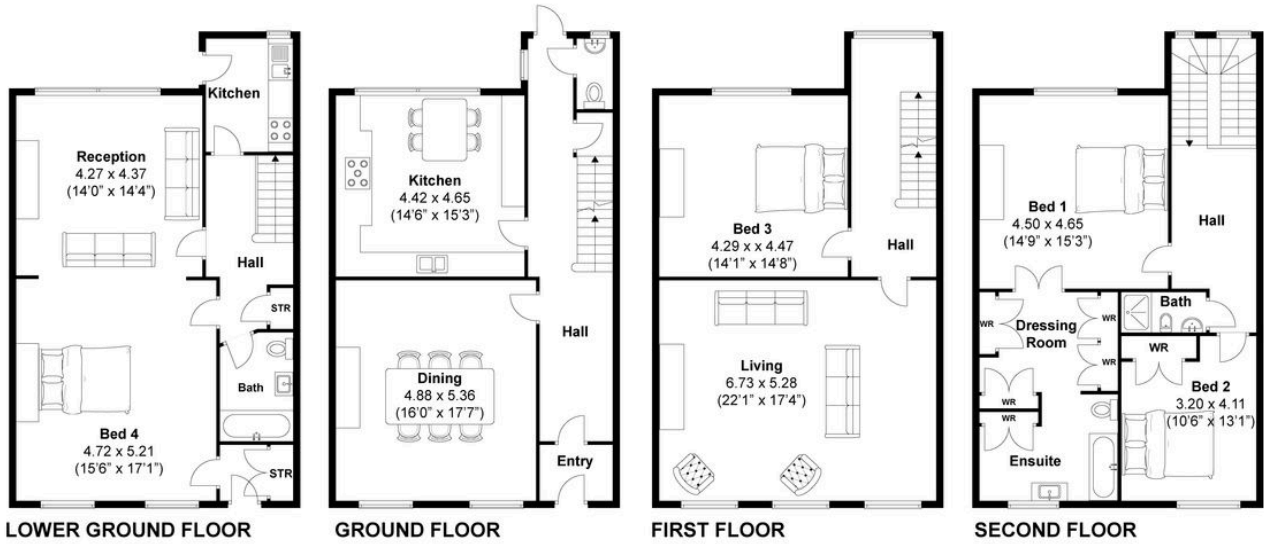




TOTAL FLOOR AREA:  
2817.6 sq. ft. (261.76 sq. m.) approx

Montpelier Crescent, Brighton  
Approximately 261.76 sqm (2817.6 sqft)

mishons



mishons



# Exceptional service

We love doing what we do, so it's always done with honesty, energy, and a smile. From marketing to moving, our team is here to guide you, step-by-step, through the process of selling your home. We'll always give you honest opinions and share our local market expertise so that you'll know where you stand at every point of the journey.

Our people are a great team. All pros, brimming with experience and drive. So we promise you all focus and no faff to make sure your sale runs smoothly and hassle-free from start to completion. We'll always keep you in the loop and keep a beady eye on your chain if you're in one so that we can respond to any changes instantly.

And never forget, we're here for you at any time.

## Service checklist



Personal, one-to-one service



Expert social media marketing



Honest valuations in line with current market conditions



Professionally designed and printed brochures



Ahead of the game marketing strategies



Daily sales progression



Professional photography



In-house financial advisors

---

### *Mishons* & their clients give notice that:

1. These sales and particulars do not constitute any part of an offer of contract, and are for the guidance of prospective purchasers only and should not be relied on as statements of fact.
2. No representations are made in these particulars as to the condition of the property or as to whether any service or facilities are in good working order.
3. All Measurements are approximate.





Whatever you're looking for...  
*We'll help you find it.*

✉ [harry@mishons.com](mailto:harry@mishons.com)

☎ 07495 69 51 20

94 Church Road, Hove, BN3 2EB

Monday-Friday: 8:45 am - 6 pm

Saturday: 9 am - 4 pm

Find us on Facebook and Instagram  
@wearemishons or visit [mishons.com](http://mishons.com)