



Elm Grove

Brighton, BN2

mishons



This beautifully presented two-bedroom maisonette is set within a stunning double-fronted red brick building...

Offering a perfect blend of character and modern living. Occupying the first and second floors and spanning over 800 sq ft, this bright and airy apartment boasts a spacious and welcoming atmosphere throughout.

The bay-fronted lounge opens onto a charming balcony, perfect for enjoying the outdoors, while the two comfortable double bedrooms offer ample space, with the master featuring an ensuite. Conveniently located within easy reach of Brighton city centre, this property is being sold with a share of the freehold and comes with no onward chain, making it an ideal move-in ready home.

➤ *Asking Price* £375,000 - £400,000

2



1



2



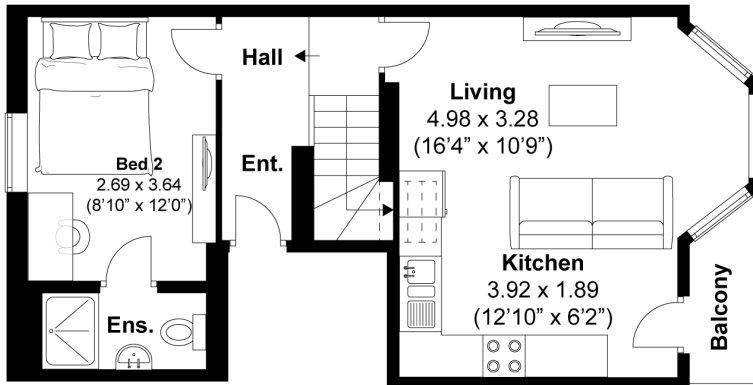
C



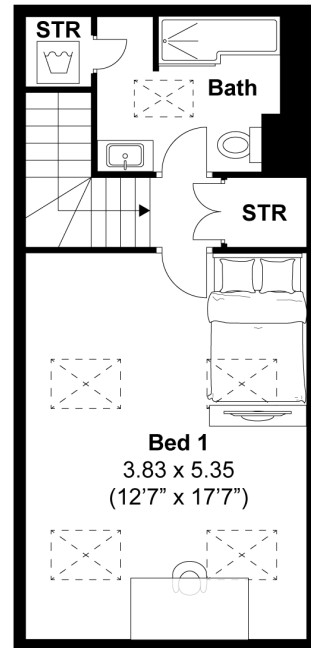
TOTAL FLOOR AREA:
818.36 sq. ft. (76 sq. m.) approx

Elm Grove, Brighton
Approximately 76 sqm (818.36 sqft)

mishons



GROUND FLOOR



FIRST FLOOR





Whatever you're looking for...
We'll help you find it.

mishons

✉ sales@mishons.com

☎ 01273 77 88 77

94 Church Road, Hove, BN3 2EB

Monday-Friday: 8:45 am - 6 pm

Saturday: 9 am - 4 pm

Find us on Facebook and Instagram
@wearemishons or visit mishons.com