



# *Shakespear Street*

Hove, BN3

mishons



# Welcome to Shakespeare Street, Hove...

A charming two-bedroom terraced home that combines traditional character with modern functionality. Situated in one of Hove's most desirable areas, this property offers a beautifully arranged interior with incredible potential to create a personalized living space. For those with an eye for design, this home provides a blank canvas to truly make your own, allowing you to adapt it to your personal taste and style.

As you step through the front door, you are greeted by a spacious living room that serves as the heart of the home. With ample room for cozy seating arrangements, this inviting space is perfect for relaxing or entertaining guests. The living room flows effortlessly into a stylish dining area, where the original wooden floorboards add an authentic touch and reflect the home's heritage. This open-plan layout enhances the sense of space on the ground floor, making it ideal for gatherings and daily living.

Adjacent to the dining area, you'll find a well-equipped kitchen that offers both style and practicality. With generous counter space and a thoughtful layout, the kitchen is designed to make meal preparation enjoyable. French doors open directly onto a private garden, allowing for an easy indoor-outdoor flow. This outdoor space offers a blank canvas of its own—perfect for al fresco dining, gardening, or creating your own urban oasis.

Heading upstairs to the first floor, a generously sized bathroom awaits, designed with comfort and convenience in mind. The bathroom includes a double sink, adding a touch of luxury and easing busy morning routines. There's plenty of additional space for storage, making this an area that combines practicality with style.

The first floor also houses two well-proportioned double bedrooms, each featuring built-in storage to maximize floor space and keep belongings neatly organized. Both bedrooms enjoy tranquil views over the garden, creating a restful retreat away from the bustle of daily life. The principal bedroom stands out with its beautiful bay window, flooding the room with natural light and enhancing its sense of space. This blank canvas is ready to be shaped into a personalized retreat with unique touches to reflect your individual taste.

This charming terraced house on Shakespeare Street perfectly balances traditional character with the opportunity for modern customization. With its original features, inviting layout, and garden space ready for your personal touch, this home offers a wonderful opportunity to immerse yourself in Hove's vibrant community while crafting a space that truly feels like your own.

➤ *Asking Price* £625,000

2



2



1



D



TOTAL FLOOR AREA:  
939 sq. ft. (87.2 sq. m.) approx

**17 Shakespeare Street, Hove**

Approximate Gross Internal Area = 87.2 sq m / 939 sq ft

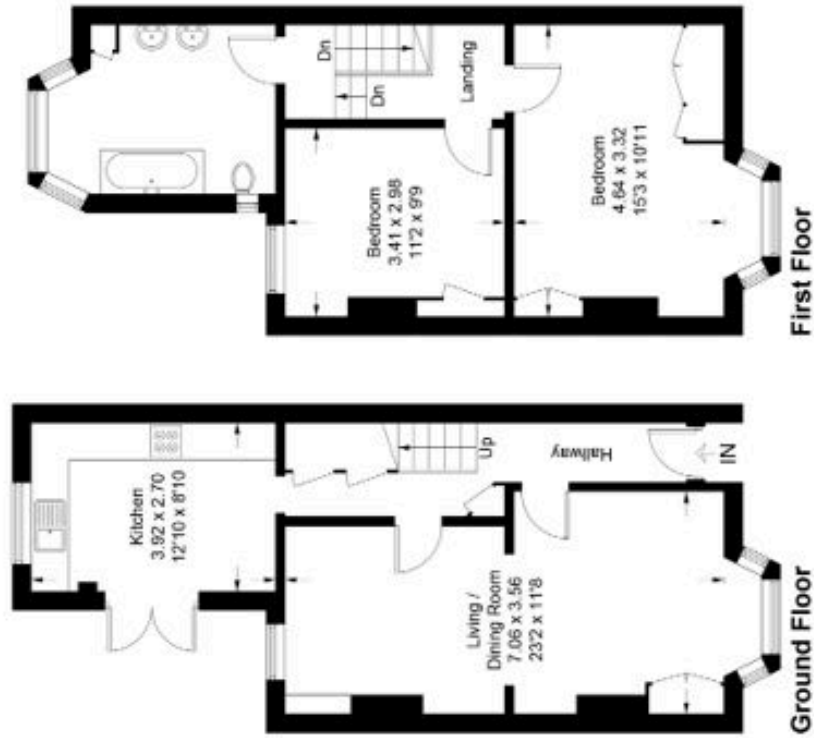
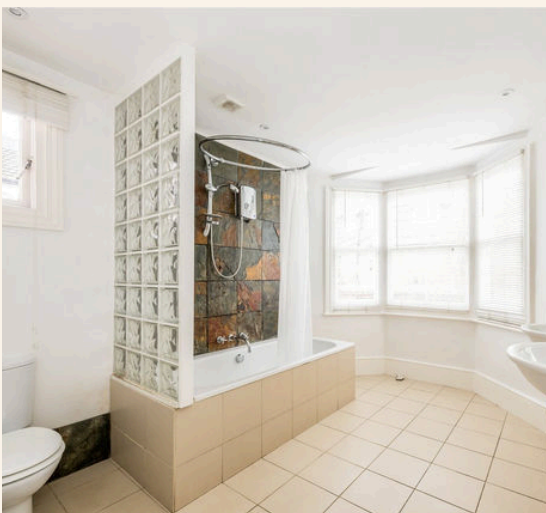


Illustration for identification purposes only, measurements are approximate, not to scale. Fourlabe.co © (ID1142768)





Whatever you're looking for...  
*We'll help you find it.*

mishons

✉ [sales@mishons.com](mailto:sales@mishons.com)

☎ 01273 77 88 77

94 Church Road, Hove, BN3 2EB

Monday-Friday: 8:45 am - 6 pm

Saturday: 9 am - 4 pm

Find us on Facebook and Instagram  
@wearemishons or visit [mishons.com](http://mishons.com)